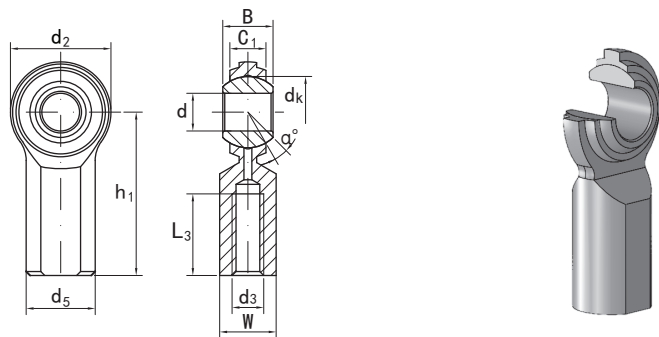


# 杆端关节轴承 CF.,CF.S 系列

## ROD ENDS CF.,CF.S SERIES

2-PIECE,METAL TO METAL

需维护型, 英制尺寸 Requiring maintenance,inch dimensions



|  |  |
|--|--|
| 壳体Housing                                    | 内圈 Inner ring  |
| 碳钢Carbon steel<br>镀锌Zinc plated              | 轴承钢Bearing steel<br>热处理Heat treated:HRC57-61<br>镀铬Hard chrome plated |
| 摩擦副Sliding contact surfaces: 钢/钢 Steel/Steel |  |

| 型号 Part No.       |                  | 尺寸 Dimensions |                          |       |                |                |                |                |                       |                |       |        | mm     | 载荷<br>Load ratings<br>kN | 重量<br>Weight<br>kg |
|-------------------|------------------|---------------|--------------------------|-------|----------------|----------------|----------------|----------------|-----------------------|----------------|-------|--------|--------|--------------------------|--------------------|
| 右螺纹<br>Right hand | 左螺纹<br>Left hand | d             | d <sub>3</sub><br>UNF-2B | B     | C <sub>1</sub> | d <sub>2</sub> | d <sub>5</sub> | h <sub>1</sub> | L <sub>3</sub><br>min | d <sub>k</sub> | w     | α<br>≈ |        |                          |                    |
| CF 3*             | CFL 3*           | 4.826         | 10-32                    | 7.92  | 5.94           | 15.88          | 10.31          | 26.97          | 12.7                  | 11.1           | 7.92  | 10     | 9.247  | 0.018                    |                    |
| CF 4*             | CFL 4*           | 6.35          | 1/4-28                   | 9.53  | 6.35           | 19.05          | 11.91          | 33.32          | 17.45                 | 12.7           | 9.53  | 13.5   | 14.269 | 0.023                    |                    |
| CF 5*             | CFL 5*           | 7.938         | 5/16-24                  | 11.1  | 7.92           | 22.23          | 12.7           | 34.93          | 17.45                 | 15.88          | 11.1  | 11     | 17.009 | 0.036                    |                    |
| CF 6              | CFL 6            | 9.525         | 3/8-24                   | 12.7  | 9.12           | 25.4           | 17.45          | 41.28          | 20.62                 | 18.26          | 14.27 | 11     | 22.627 | 0.059                    |                    |
| CF 7              | CFL 7            | 11.113        | 7/16-20                  | 14.27 | 10.31          | 28.58          | 19.05          | 46.02          | 23.8                  | 20.62          | 15.88 | 10.5   | 28.400 | 0.082                    |                    |
| CF 8              | CFL 8            | 12.7          | 1/2-20                   | 15.88 | 11.5           | 33.32          | 22.23          | 53.98          | 26.97                 | 23.8           | 19.05 | 10     | 40.459 | 0.132                    |                    |
| CF 10             | CFL 10           | 15.875        | 5/8-18                   | 19.05 | 12.29          | 38.1           | 25.4           | 63.5           | 34.93                 | 28.58          | 22.23 | 13     | 43.203 | 0.195                    |                    |
| CF 12             | CFL 12           | 19.05         | 3/4-16                   | 22.23 | 15.06          | 44.45          | 28.58          | 73.03          | 39.67                 | 33.32          | 25.4  | 12     | 63.193 | 0.295                    |                    |

—带“\*”的型号均不配油孔和油杯, 其余若需配油杯, 请用CF.S的代号。

—其中负荷值仅适用于不带油杯的情况。

— Add "S" for grease nipple,example:CF 6 S,CFL 6 S.

Grease fittings not available for sizes marked "\*".

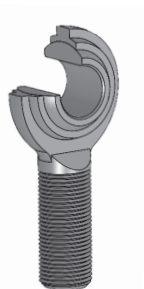
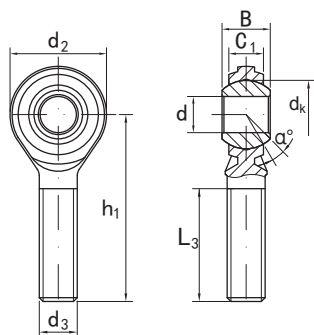
—Load ratings apply only to rod ends without grease fittings,for load ratings with fitting,please consult KGBAL.

# 杆端关节轴承 CM.,CM..S 系列

## ROD ENDS CM.,CM..S SERIES

2-PIECE,METAL TO METAL

需维护型, 英制尺寸 Requiring maintenance,inch dimensions



|  |  |
|--|--|
| 壳体Housing                                    | 内圈 Inner ring  |
| 碳钢Carbon steel<br>镀锌Zinc plated              | 轴承钢Bearing steel<br>热处理Heat treated:HRC57-61<br>镀铬Hard chrome plated |
| 摩擦副Sliding contact surfaces: 钢/钢 Steel/Steel |  |

| 型号 Part No.       |                  | 尺寸 Dimensions |                          |       |                |                |                |                       |                |        | mm     | 载荷<br>Load ratings<br>kN | 重量<br>Weight<br>kg |
|-------------------|------------------|---------------|--------------------------|-------|----------------|----------------|----------------|-----------------------|----------------|--------|--------|--------------------------|--------------------|
| 右螺纹<br>Right hand | 左螺纹<br>Left hand | d             | d <sub>3</sub><br>UNF-3A | B     | C <sub>1</sub> | d <sub>2</sub> | h <sub>1</sub> | L <sub>3</sub><br>min | d <sub>k</sub> | α<br>≈ |        |                          |                    |
| CM 3*             | CML 3*           | 4.826         | 10-32                    | 7.92  | 5.94           | 15.88          | 31.75          | 19.05                 | 11.1           | 10     | 5.355  | 0.014                    |                    |
| CM 4*             | CML 4*           | 6.35          | 1/4-28                   | 9.53  | 6.35           | 19.05          | 39.67          | 25.4                  | 12.7           | 13.5   | 9.839  | 0.018                    |                    |
| CM 5*             | CML 5*           | 7.938         | 5/16-24                  | 11.1  | 7.92           | 22.23          | 47.63          | 31.75                 | 15.88          | 11     | 15.91  | 0.032                    |                    |
| CM 6              | CML 6            | 9.525         | 3/8-24                   | 12.7  | 9.12           | 25.4           | 49.23          | 31.75                 | 18.26          | 11     | 22.542 | 0.05                     |                    |
| CM 7              | CML 7            | 11.113        | 7/16-20                  | 14.27 | 10.31          | 28.58          | 53.98          | 34.93                 | 20.62          | 10.5   | 28.223 | 0.068                    |                    |
| CM 8              | CML 8            | 12.7          | 1/2-20                   | 15.88 | 11.5           | 33.32          | 61.93          | 38.1                  | 23.8           | 10     | 37.087 | 0.109                    |                    |
| CM 10             | CML 10           | 15.875        | 5/8-18                   | 19.05 | 12.29          | 38.1           | 66.68          | 41.28                 | 28.58          | 13     | 43.203 | 0.163                    |                    |
| CM 12             | CML 12           | 19.05         | 3/4-16                   | 22.23 | 15.06          | 44.45          | 73.03          | 44.45                 | 33.32          | 12     | 63.193 | 0.259                    |                    |

——带“\*”的型号均不配油孔和油杯, 其余若需配油杯, 请用CM..S的代号。

——其中负荷值仅适用于不带油杯的情况。

—— Add "S" for grease nipple,example:CM 6 S,CML 6 S.

Grease fittings not available for sizes marked "\*".

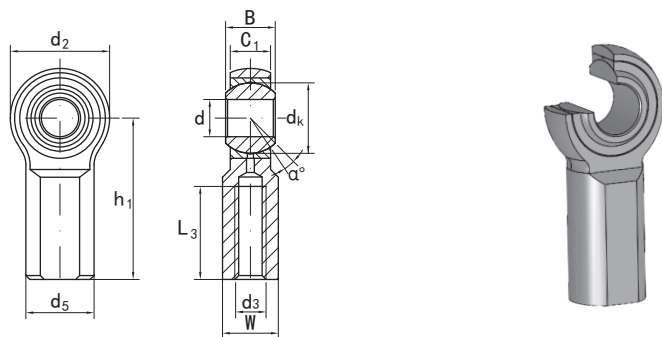
——Load ratings apply only to rod ends without grease fittings,for load ratings with fitting,please consult KGBAL.

杆端关节轴承 **JF.,JF.S** 系列  
**ROD END BEARINGS JF.,JF.S SERIES**

**KGBAL**®

3-PIECE,PRECISION-WEAR RESISTANT

需维护型, 英制尺寸 Requiring maintenance,inch dimensions



|                                 |  |                 |
|---------------------------------|--|-----------------|
| 壳体Housing                       | 内圈Inner ring   | 外圈 Outer ring   |
| 碳钢Carbon steel<br>镀锌Zinc plated | 轴承钢Bearing steel<br>热处理Heat treated:HRC57-61<br>镀铬Hard chrome plated | 碳钢Carbon steel  |
| 摩擦副Sliding contact surfaces:    |  | 钢/钢 Steel/Steel |

| 型号 Part No.       |                  | 尺寸 Dimensions |                          |       |                |                |                |                |                       |                |       |        | 载荷<br>Load ratings<br>kN | 重量<br>Weight<br>kg |
|-------------------|------------------|---------------|--------------------------|-------|----------------|----------------|----------------|----------------|-----------------------|----------------|-------|--------|--------------------------|--------------------|
| 右螺纹<br>Right hand | 左螺纹<br>Left hand | d             | d <sub>3</sub><br>UNF-2B | B     | C <sub>1</sub> | d <sub>5</sub> | d <sub>2</sub> | h <sub>1</sub> | L <sub>3</sub><br>min | d <sub>k</sub> | W     | α<br>≈ |                          |                    |
| JF 2*             | JFL 2*           | 3.175         | 6-32                     | 6.35  | 4.75           | 7.92           | 12.70          | 20.62          | 11.10                 | 7.92           | 6.35  | 8      | 5.344                    | 0.009              |
| JF 3*             | JFL 3*           | 4.826         | 10-32                    | 7.92  | 6.35           | 10.31          | 15.88          | 26.97          | 14.27                 | 11.10          | 7.92  | 6.5    | 6.805                    | 0.017              |
| JF 4*             | JFL 4*           | 6.35          | 1/4-28                   | 9.53  | 7.14           | 11.91          | 19.05          | 33.32          | 19.05                 | 12.70          | 9.53  | 8      | 11.297                   | 0.027              |
| JF 5*             | JFL 5*           | 7.938         | 5/16-24                  | 11.10 | 8.74           | 12.70          | 22.23          | 34.93          | 19.05                 | 15.88          | 11.10 | 7      | 13.934                   | 0.042              |
| JF 6              | JFL 6            | 9.525         | 3/8-24                   | 12.70 | 10.31          | 17.45          | 25.40          | 41.28          | 23.80                 | 18.26          | 14.27 | 6      | 17.416                   | 0.069              |
| JF 7              | JFL 7            | 11.113        | 7/16-20                  | 14.27 | 11.10          | 19.05          | 28.58          | 46.02          | 26.97                 | 20.62          | 15.88 | 7      | 18.759                   | 0.09               |
| JF 8              | JFL 8            | 12.7          | 1/2-20                   | 15.88 | 12.70          | 22.23          | 33.32          | 53.98          | 30.15                 | 23.80          | 19.05 | 6      | 29.624                   | 0.149              |
| JF 10             | JFL 10           | 15.875        | 5/8-18                   | 19.05 | 14.27          | 25.40          | 38.10          | 63.50          | 38.10                 | 28.58          | 22.23 | 8      | 32.752                   | 0.216              |
| JF 12             | JFL 12           | 19.05         | 3/4-16                   | 22.23 | 17.45          | 28.58          | 44.45          | 73.03          | 44.45                 | 33.32          | 25.40 | 7      | 51.237                   | 0.328              |
| JF 14             | JFL 14           | 22.225        | 7/8-14                   | 22.23 | 19.43          | 33.02          | 50.80          | 85.73          | 47.63                 | 33.32          | 28.58 | 3.5    | 82.185                   | 0.467              |
| JF 14-1           | JFL 14-1         | 22.225        | 7/8-14                   | 22.23 | 17.45          | 33.32          | 50.80          | 88.90          | 46.02                 | 33.32          | 30.15 | 6      | 101.601                  | 0.467              |
| JF 16             | JFL 16           | 25.4          | 1 1/4-12                 | 34.93 | 25.40          | 41.28          | 69.85          | 104.78         | 53.98                 | 47.63          | 38.10 | 8.5    | 193.67                   | 0.964              |
| JF 16-1           | JFL 16-1         | 25.4          | 1-14                     | 34.93 | 25.40          | 41.28          | 69.85          | 104.78         | 53.98                 | 47.63          | 38.10 | 8.5    | 193.67                   | 1.093              |
| JF 16-2           | JFL 16-2         | 25.4          | 1-12                     | 34.93 | 25.40          | 41.28          | 69.85          | 104.78         | 53.98                 | 47.63          | 38.10 | 8.5    | 193.67                   | 1.093              |

—带"\*"的型号均不配油孔或油杯, 其余若需配油杯, 请用JF..S代号。

—表中负荷值仅适用于不带油杯的情况。

— Add "S" for grease nipple,example:JF 6 S,JFL 6 S.

Grease fittings not available for sizes marked "\*".

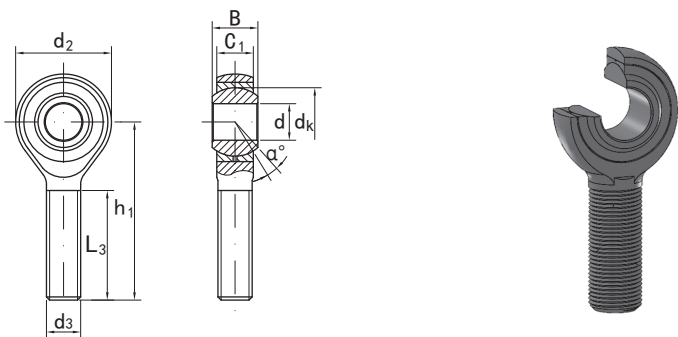
—Load ratings apply only to rod ends without grease fittings,for load ratings with fitting,please consult KGBAL.

杆端关节轴承 **JM.,JM..S** 系列  
**ROD END BEARINGS JM.,JM..S SERIES**

**KGBAL**®

3-PIECE,PRECISION-WEAR RESISTANT

需维护型, 英制尺寸 Requiring maintenance,inch dimensions



|  |  |                |
|--|--|----------------|
| 壳体Housing                                    | 内圈Inner ring   | 外圈 Outer ring  |
| 碳钢Carbon steel<br>镀锌Zinc plated              | 轴承钢Bearing steel<br>热处理Heat treated:HRC57-61<br>镀铬Hard chrome plated | 碳钢Carbon steel |
| 摩擦副Sliding contact surfaces: 钢/钢 Steel/Steel |  |                |

| 型号 Part No.       |                  | 尺寸 Dimensions |                          |       |                |                |                |                       |                |        | mm      | 载荷<br>Load ratings<br>kN | 重量<br>Weight<br>kg |
|-------------------|------------------|---------------|--------------------------|-------|----------------|----------------|----------------|-----------------------|----------------|--------|---------|--------------------------|--------------------|
| 右螺纹<br>Right hand | 左螺纹<br>Left hand | d             | d <sub>3</sub><br>UNF-3A | B     | C <sub>1</sub> | d <sub>2</sub> | h <sub>1</sub> | L <sub>3</sub><br>min | d <sub>k</sub> | α<br>≈ |         |                          |                    |
| <b>JM 2*</b>      | <b>JML 2*</b>    | 3.175         | 6-32                     | 6.35  | 4.75           | 12.7           | 23.8           | 14.27                 | 7.92           | 8      | 2.236   | 0.006                    |                    |
| <b>JM 3*</b>      | <b>JML 3*</b>    | 4.826         | 10-32                    | 7.92  | 6.35           | 15.88          | 31.75          | 19.05                 | 11.1           | 6.5    | 5.197   | 0.013                    |                    |
| <b>JM 4*</b>      | <b>JML 4*</b>    | 6.35          | 1/4-28                   | 9.53  | 7.14           | 19.05          | 39.67          | 25.4                  | 12.7           | 8      | 9.600   | 0.02                     |                    |
| <b>JM 5*</b>      | <b>JML 5*</b>    | 7.938         | 5/16-24                  | 11.1  | 8.74           | 22.23          | 47.63          | 31.75                 | 15.88          | 7      | 12.385  | 0.033                    |                    |
| <b>JM 6</b>       | <b>JML 6</b>     | 9.525         | 3/8-24                   | 12.7  | 10.31          | 25.4           | 49.23          | 31.75                 | 18.26          | 6      | 17.416  | 0.051                    |                    |
| <b>JM 7</b>       | <b>JML 7</b>     | 11.113        | 7/16-20                  | 14.27 | 11.1           | 28.58          | 53.98          | 34.93                 | 20.62          | 7      | 18.759  | 0.073                    |                    |
| <b>JM 8</b>       | <b>JML 8</b>     | 12.7          | 1/2-20                   | 15.88 | 12.7           | 33.32          | 61.93          | 38.1                  | 23.8           | 6      | 29.624  | 0.113                    |                    |
| <b>JM 10</b>      | <b>JML 10</b>    | 15.875        | 5/8-18                   | 19.05 | 14.27          | 38.1           | 66.68          | 41.28                 | 28.58          | 8      | 32.752  | 0.173                    |                    |
| <b>JM 12</b>      | <b>JML 12</b>    | 19.05         | 3/4-16                   | 22.23 | 17.45          | 44.45          | 73.03          | 44.45                 | 33.32          | 7      | 51.237  | 0.273                    |                    |
| <b>JM 14</b>      | <b>JML 14</b>    | 22.225        | 7/8-14                   | 22.23 | 19.43          | 50.8           | 85.73          | 50.8                  | 33.32          | 3.5    | 82185   | 0.411                    |                    |
| <b>JM 14-1</b>    | <b>JML 14-1</b>  | 22.225        | 7/8-14                   | 22.23 | 17.45          | 50.8           | 85.73          | 47.63                 | 33.32          | 6      | 101.601 | 0.411                    |                    |
| <b>JM 16</b>      | <b>JML 16</b>    | 25.4          | 1 1/4-12                 | 34.93 | 25.4           | 69.85          | 104.78         | 53.98                 | 47.63          | 8.5    | 193.67  | 1.091                    |                    |
| <b>JM 16-1</b>    | <b>JML 16-1</b>  | 25.4          | 1-14                     | 34.93 | 25.4           | 69.85          | 104.78         | 53.98                 | 47.63          | 8.5    | 193.67  | 0.965                    |                    |
| <b>JM 16-2</b>    | <b>JML 16-2</b>  | 25.4          | 1-12                     | 34.93 | 25.4           | 69.85          | 104.78         | 53.98                 | 47.63          | 8.5    | 193.67  | 0.965                    |                    |

—带"\*"的型号均不配油孔或油杯, 其余若需配油杯, 请用**JM..S**代号。

—表中负荷值仅适用于不带油杯的情况。

—Add "S" for grease nipple,example:JM 6 S,JML 6 S.

Grease fittings not available for sizes marked "\*".

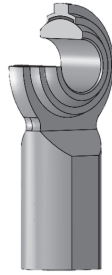
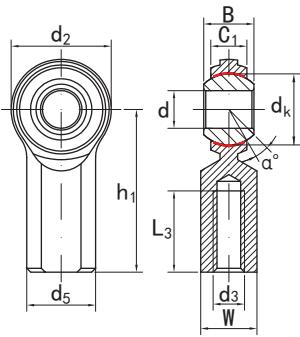
—Load ratings apply only to rod ends without grease fittings,for load ratings with fitting,please consult KGBAL.

# 杆端关节轴承 CF.T 系列

## ROD ENDS CF.T SERIES

2-PIECE, METAL TO PTFE LINERS

免维护型, 英制尺寸 Maintenance-free, inch dimensions



|   |  |
|---|--|
| 壳体 Housing                                      | 内圈 Inner ring  |
| 碳钢 Carbon steel<br>镀锌 Zinc plated               | 轴承钢 Bearing steel<br>热处理 Heat treated: HRC57-61<br>镀铬 Hard chrome plated |
| 摩擦副 Sliding contact surfaces: 钢/PTFE Steel/PTFE |  |

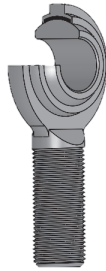
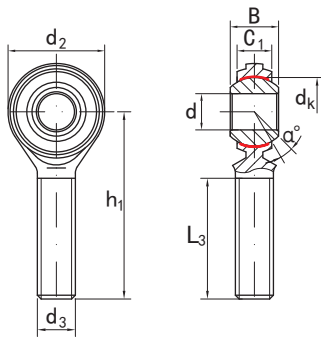
| 型号 Part No.    |               | 尺寸 Dimensions |                       |       |                |                |                |                |                    |                |       |      | mm      | 载荷 Load ratings kN | 重量 Weight kg |
|----------------|---------------|---------------|-----------------------|-------|----------------|----------------|----------------|----------------|--------------------|----------------|-------|------|---------|--------------------|--------------|
| 右螺纹 Right hand | 左螺纹 Left hand | d             | d <sub>3</sub> UNF-2B | B     | C <sub>1</sub> | d <sub>2</sub> | d <sub>5</sub> | h <sub>1</sub> | L <sub>3</sub> min | d <sub>k</sub> | W     | α ≈  |         |                    |              |
| CF 3 T         | CFL 3 T       | 4.826         | 10-32                 | 7.92  | 5.94           | 15.875         | 10.31          | 26.97          | 12.7               | 11.1           | 7.92  | 10   | 8.02    | 0.018              |              |
| CF 4 T         | CFL 4 T       | 6.35          | 1/4-28                | 9.53  | 6.35           | 19.05          | 11.91          | 33.32          | 17.45              | 12.7           | 9.53  | 13.5 | 16.082  | 0.023              |              |
| CF 5 T         | CFL 5 T       | 7.938         | 5/16-24               | 11.1  | 7.92           | 22.23          | 12.7           | 34.93          | 17.45              | 15.88          | 11.1  | 11   | 28.693  | 0.036              |              |
| CF 6 T         | CFL 6 T       | 9.525         | 3/8-24                | 12.7  | 9.12           | 25.4           | 17.45          | 41.28          | 20.62              | 18.26          | 14.27 | 11   | 38.371  | 0.059              |              |
| CF 7 T         | CFL 7 T       | 11.113        | 7/16-20               | 14.27 | 10.31          | 28.58          | 19.05          | 46.02          | 23.8               | 20.62          | 15.88 | 10.5 | 41.676  | 0.082              |              |
| CF 8 T         | CFL 8 T       | 12.7          | 1/2-20                | 15.88 | 11.5           | 33.32          | 22.23          | 53.98          | 26.97              | 23.8           | 19.05 | 10   | 67.299  | 0.132              |              |
| CF 10 T        | CFL 10 T      | 15.875        | 5/8-18                | 19.05 | 12.29          | 38.1           | 25.4           | 63.5           | 34.93              | 28.58          | 22.23 | 13   | 75.271  | 0.195              |              |
| CF 12 T        | CFL 12 T      | 19.05         | 3/4-16                | 22.23 | 15.06          | 44.45          | 28.58          | 73.03          | 39.67              | 33.32          | 25.4  | 12   | 113.642 | 0.295              |              |

# 杆端关节轴承 CM..T 系列

## ROD ENDS CM..T SERIES

2-PIECE, METAL TO PTFE LINERS

免维护型, 英制尺寸 Maintenance-free, inch dimensions



|   |  |
|---|--|
| 壳体 Housing                                      | 内圈 Inner ring  |
| 碳钢 Carbon steel<br>镀锌 Zinc plated               | 轴承钢 Bearing steel<br>热处理 Heat treated: HRC57-61<br>镀铬 Hard chrome plated |
| 摩擦副 Sliding contact surfaces: 钢/PTFE Steel/PTFE |  |

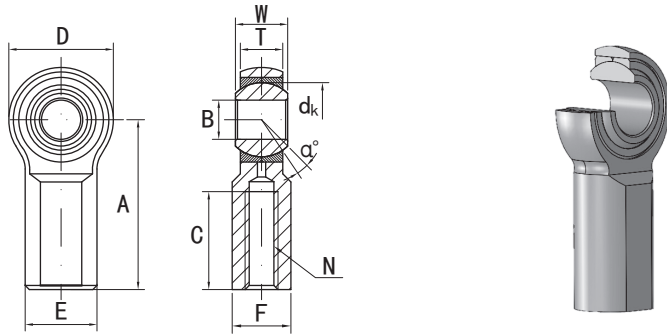
| 型号 Part No.    |               | 尺寸 Dimensions |                       |       |                |                |                |                    |                |      | mm      | 载荷 Load ratings kN | 重量 Weight kg |
|----------------|---------------|---------------|-----------------------|-------|----------------|----------------|----------------|--------------------|----------------|------|---------|--------------------|--------------|
| 右螺纹 Right hand | 左螺纹 Left hand | d             | d <sub>3</sub> UNF-3A | B     | C <sub>1</sub> | d <sub>2</sub> | h <sub>1</sub> | L <sub>3</sub> min | d <sub>k</sub> | α ≈  |         |                    |              |
| CM 3 T         | CML 3 T       | 4.826         | 10-32                 | 7.92  | 5.94           | 15.875         | 31.75          | 19.05              | 11.1           | 10   | 8.02    | 0.014              |              |
| CM 4 T         | CML 4 T       | 6.35          | 1/4-28                | 9.53  | 6.35           | 19.05          | 39.67          | 25.4               | 12.7           | 13.5 | 16.082  | 0.018              |              |
| CM 5 T         | CML 5 T       | 7.938         | 5/16-24               | 11.1  | 7.92           | 22.23          | 47.63          | 31.75              | 15.88          | 11   | 28.693  | 0.032              |              |
| CM 6 T         | CML 6 T       | 9.525         | 3/8-24                | 12.7  | 9.12           | 25.4           | 49.23          | 31.75              | 18.26          | 11   | 38.371  | 0.050              |              |
| CM 7 T         | CML 7 T       | 11.113        | 7/16-20               | 14.27 | 10.31          | 28.58          | 53.98          | 34.93              | 20.62          | 10.5 | 41.676  | 0.058              |              |
| CM 8 T         | CML 8 T       | 12.7          | 1/2-20                | 15.88 | 11.5           | 33.32          | 61.93          | 38.1               | 23.8           | 10   | 67.299  | 0.109              |              |
| CM 10 T        | CML 10 T      | 15.875        | 5/8-18                | 19.05 | 12.29          | 38.1           | 66.68          | 41.28              | 28.58          | 13   | 75.271  | 0.163              |              |
| CM 12 T        | CML 12 T      | 19.05         | 3/4-16                | 22.23 | 15.06          | 44.45          | 73.03          | 44.45              | 33.32          | 12   | 113.642 | 0.259              |              |

# 杆端关节轴承 JF..F 系列

## ROD END BEARINGS JF..F SERIES

3-PIECE, COMMERCIAL, SINTERED BRONZE

免维护型, 英制尺寸 Maintenance-free, inch dimensions



| 壳体 Housing                                      | 内圈 Inner ring  | 外圈 Outer ring |
|---|--|---------------|
| 碳钢 Carbon steel<br>镀锌 Zinc plated               | 轴承钢 Bearing steel<br>热处理 Heat treated: HRC57-61<br>镀铬 Hard chrome plated | 青铜 Bronze     |
| 摩擦副 Sliding contact surfaces: 钢/青铜 Steel/Bronze |  |               |

| 型号 Part No.    |               | 尺寸 Dimensions mm |        |        |        |        |        |          |        |        |        |     | 载荷 Load ratings kN | 重量 Weight kg |
|----------------|---------------|------------------|--------|--------|--------|--------|--------|----------|--------|--------|--------|-----|--------------------|--------------|
| 右螺纹 Right hand | 左螺纹 Left hand | B                | D      | W      | T      | dk     | A      | N UNF-2B | C min  | E      | F      | α ≈ |                    |              |
| JF 3 F         | JFL 3 F       | 4.826            | 15.875 | 7.925  | 6.35   | 11.1   | 26.975 | 10-32    | 12.7   | 10.3   | 7.925  | 13  | 7.23               | 0.018        |
| JF 4 F         | JFL 4 F       | 6.35             | 19.05  | 9.525  | 7.137  | 12.7   | 33.325 | 1/4-28   | 17.4   | 11.9   | 9.525  | 16  | 11.32              | 0.027        |
| JF 5 F         | JFL 5 F       | 7.938            | 22.225 | 11.1   | 8.738  | 15.875 | 34.925 | 5/16-24  | 17.4   | 12.7   | 11.1   | 14  | 14.24              | 0.041        |
| JF 6 F         | JFL 6 F       | 9.525            | 25.4   | 12.7   | 10.312 | 18.263 | 41.275 | 3/8-24   | 20.6   | 17.4   | 14.275 | 12  | 17.57              | 0.068        |
| JF 7 F         | JFL 7 F       | 11.113           | 28.575 | 14.275 | 11.1   | 20.625 | 46.025 | 7/16-20  | 23.8   | 19.05  | 15.875 | 14  | 19.13              | 0.091        |
| JF 8 F         | JFL 8 F       | 12.7             | 33.325 | 15.875 | 12.7   | 23.8   | 53.975 | 1/2-20   | 27.0   | 22.225 | 19.05  | 12  | 29.81              | 0.150        |
| JF 10 F        | JFL 10 F      | 15.875           | 38.1   | 19.05  | 14.275 | 28.575 | 63.5   | 5/8-18   | 34.925 | 25.4   | 22.225 | 16  | 32.92              | 0.218        |
| JF 12 F        | JFL 12 F      | 19.05            | 44.45  | 22.225 | 17.45  | 33.325 | 73.025 | 3/4-16   | 39.7   | 28.575 | 25.4   | 14  | 51.39              | 0.327        |

——若需配油杯, 轴承型号须加“S”, e.g. JF 8 FS 的代号。

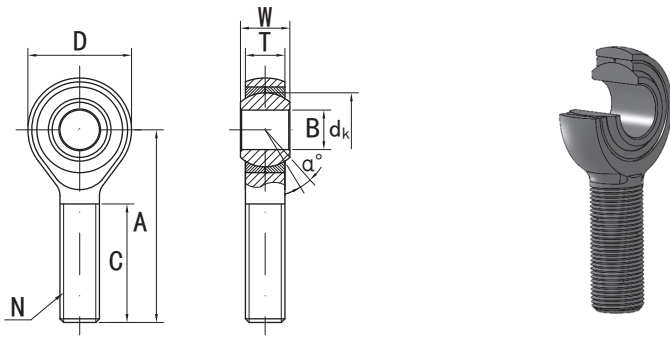
——Add "S" for grease nipple, example: JF 8 FS.

# 杆端关节轴承 JM..F 系列

## ROD ENDS BEARINGS JM..F SERIES

3-PIECE, COMMERCIAL, SINTERED BRONZE

免维护型, 英制尺寸 Maintenance-free, inch dimensions



| 壳体 Housing                        | 内圈 Inner ring  | 外圈 Outer ring     |
|-----------------------------------|--|-------------------|
| 碳钢 Carbon steel<br>镀锌 Zinc plated | 轴承钢 Bearing steel<br>热处理 Heat treated: HRC57-61<br>镀铬 Hard chrome plated | 青铜 Bronze         |
| 摩擦副 Sliding contact surfaces:     |  | 钢/青铜 Steel/Bronze |

| 型号 Part No.       |                  | 尺寸 Dimensions |        |        |        |        |        |         |          |        | mm     | 载荷<br>Load ratings<br>kN | 重量<br>Weight<br>kg |
|-------------------|------------------|---------------|--------|--------|--------|--------|--------|---------|----------|--------|--------|--------------------------|--------------------|
| 右螺纹<br>Right hand | 左螺纹<br>Left hand | B             | D      | W      | T      | dk     | A      | N<br>3A | C<br>min | α<br>≈ |        |                          |                    |
| JM 3 F            | JML 3 F          | 4.826         | 15.875 | 7.925  | 6.35   | 11.1   | 31.75  | 10-32   | 19.05    | 13     | 5.223  | 0.014                    |                    |
| JM 4 F            | JML 4 F          | 6.35          | 19.05  | 9.525  | 7.137  | 12.7   | 39.675 | 1/4-28  | 25.4     | 16     | 9.646  | 0.018                    |                    |
| JM 5 F            | JML 5 F          | 7.938         | 22.225 | 11.1   | 8.738  | 15.875 | 47.625 | 5/16-24 | 31.75    | 14     | 12.440 | 0.032                    |                    |
| JM 6 F            | JML 6 F          | 9.525         | 25.4   | 12.7   | 10.312 | 18.263 | 49.225 | 3/8-24  | 31.75    | 12     | 17.850 | 0.050                    |                    |
| JM 7 F            | JML 7 F          | 11.113        | 28.575 | 14.275 | 11.1   | 20.625 | 53.975 | 7/16-20 | 34.925   | 14     | 18.882 | 0.073                    |                    |
| JM 8 F            | JML 8 F          | 12.7          | 33.325 | 15.875 | 12.7   | 23.8   | 61.925 | 1/2-20  | 38.1     | 12     | 29.810 | 0.114                    |                    |
| JM 10 F           | JML 10 F         | 15.875        | 38.1   | 19.05  | 14.275 | 28.575 | 66.675 | 5/8-18  | 41.275   | 16     | 32.924 | 0.173                    |                    |
| JM 12 F           | JML 12 F         | 19.05         | 44.45  | 22.225 | 17.45  | 33.325 | 73.025 | 3/4-16  | 44.45    | 14     | 51.388 | 0.272                    |                    |

——若需配油杯, 轴承型号须加“S”, e.g. JM 8 FS 的代号。

——Add "S" for grease nipple, example: JM 8 FS.

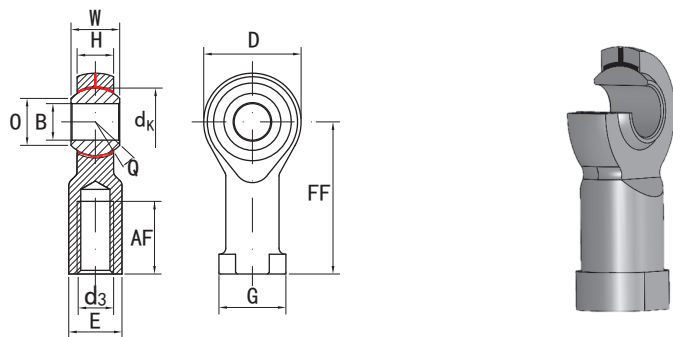


杆端关节轴承 **PF.G** 系列  
**ROD ENDS BEARINGS PF.G SERIES**

**KGBAL**®

2-PIECE, METAL TO POLYAMIDES LINERS

免维护型, 英制尺寸 Maintenance-free, inch dimensions



|   |  |
|---|--|
| 壳体 Housing                                      | 内圈 Inner ring                                      |
| 碳钢 Carbon steel<br>镀锌 Zinc plated               | 低碳钢 Low carbon steel<br>热处理 Heat treated: HRC55min |
| 摩擦副 Sliding contact surfaces: 钢/PTFE Steel/PTFE |  |

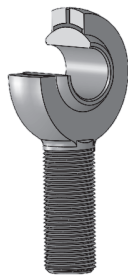
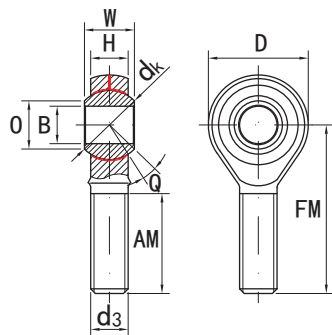
| 型号 Part No.       |                  | 尺寸 Dimensions |       |       |       |       |       |       |       |       |       |                          |     | mm | 载荷<br>Load ratings<br>kN | 重量<br>Weight<br>kg |
|-------------------|------------------|---------------|-------|-------|-------|-------|-------|-------|-------|-------|-------|--------------------------|-----|----|--------------------------|--------------------|
| 右螺纹<br>Right hand | 左螺纹<br>Left hand | B             | W     | H     | AF    | FF    | D     | G     | E     | O     | dk    | d <sub>3</sub><br>UNF-2B | Q   |    |                          |                    |
| PF 3 G            | PFL 3 G          | 4.826         | 7.92  | 6.35  | 14.27 | 26.97 | 15.88 | 10.31 | 7.92  | 7.77  | 11.10 | 10-32                    | 12° | 5  | 0.009                    |                    |
| PF 4 G            | PFL 4 G          | 6.35          | 9.53  | 7.14  | 19.05 | 33.32 | 19.05 | 11.89 | 9.53  | 8.40  | 12.70 | 1/4-28                   | 14° | 7  | 0.018                    |                    |
| PF 5 G            | PFL 5 G          | 7.938         | 11.1  | 8.74  | 19.05 | 34.93 | 22.23 | 12.7  | 11.1  | 11.35 | 15.88 | 5/16-24                  | 12° | 12 | 0.032                    |                    |
| PF 6 G            | PFL 6 G          | 9.525         | 12.7  | 10.31 | 23.8  | 41.28 | 25.4  | 17.45 | 14.27 | 13.12 | 18.26 | 3/8-24                   | 11° | 14 | 0.05                     |                    |
| PF 7 G            | PFL 7 G          | 11.113        | 14.27 | 11.1  | 26.98 | 46.03 | 28.58 | 19.02 | 15.88 | 14.89 | 20.62 | 7/16-20                  | 12° | 17 | 0.068                    |                    |
| PF 8 G            | PFL 8 G          | 12.7          | 15.88 | 12.7  | 30.15 | 53.98 | 33.32 | 22.23 | 19.05 | 17.73 | 23.80 | 1/2-20                   | 10° | 28 | 0.11                     |                    |
| PF 10 G           | PFL 10 G         | 15.875        | 19.05 | 14.27 | 38.1  | 63.5  | 38.1  | 25.4  | 22.23 | 21.30 | 28.58 | 5/8-18                   | 15° | 32 | 0.17                     |                    |
| PF 12 G           | PFL 12 G         | 19.05         | 22.23 | 17.45 | 44.45 | 73.03 | 44.45 | 28.58 | 25.4  | 24.83 | 32.32 | 3/4-16                   | 12° | 40 | 0.26                     |                    |

杆端关节轴承 **PM.G** 系列  
**ROD ENDS BEARINGS PM.G SERIES**

**KGBAL**®

2-PIECE, METAL TO POLYAMIDES LINERS

免维护型, 英制尺寸 Maintenance-free, inch dimensions



|   |  |
|---|--|
| 壳体 Housing                                      | 内圈 Inner ring                                      |
| 碳钢 Carbon steel<br>镀锌 Zinc plated               | 低碳钢 Low carbon steel<br>热处理 Heat treated: HRC55min |
| 摩擦副 Sliding contact surfaces: 钢/PTFE Steel/PTFE |  |

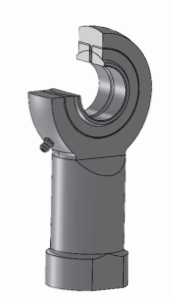
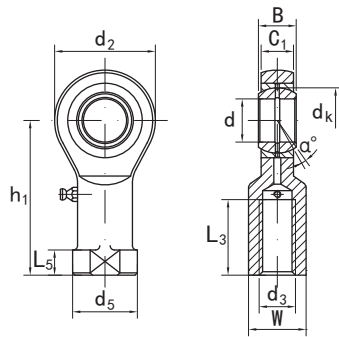
| 型号 Part No.       |                  | 尺寸 Dimensions |       |       |        |       |       |       |                |                          |     | mm | 载荷<br>Load ratings<br>kN | 重量<br>Weight<br>kg |
|-------------------|------------------|---------------|-------|-------|--------|-------|-------|-------|----------------|--------------------------|-----|----|--------------------------|--------------------|
| 右螺纹<br>Right hand | 左螺纹<br>Left hand | B             | W     | H     | AM     | FM    | D     | O     | d <sub>k</sub> | d <sub>3</sub><br>UNF-3A | Q   |    |                          |                    |
| PM 3 G            | PML 3 G          | 4.826         | 7.92  | 6.35  | 19.05  | 31.75 | 15.88 | 7.77  | 11.10          | 10-32                    | 12° | 5  | 0.009                    |                    |
| PM 4 G            | PML 4 G          | 6.35          | 9.525 | 7.14  | 25.4   | 39.67 | 19.05 | 8.40  | 12.70          | 1/4-28                   | 14° | 7  | 0.018                    |                    |
| PM 5 G            | PML 5 G          | 7.938         | 11.1  | 8.74  | 31.75  | 47.63 | 22.23 | 11.35 | 15.88          | 5/16-24                  | 12° | 12 | 0.032                    |                    |
| PM 6 G            | PML 6 G          | 9.525         | 12.7  | 10.31 | 31.75  | 49.23 | 25.4  | 13.12 | 18.26          | 3/8-24                   | 11° | 14 | 0.05                     |                    |
| PM 7 G            | PML 7 G          | 11.113        | 14.27 | 11.1  | 34.925 | 53.98 | 28.58 | 14.89 | 20.62          | 7/16-20                  | 12° | 17 | 0.068                    |                    |
| PM 8 G            | PML 8 G          | 12.7          | 15.88 | 12.7  | 38.1   | 61.92 | 33.32 | 17.73 | 23.80          | 1/2-20                   | 10° | 26 | 0.11                     |                    |
| PM 10 G           | PML 10 G         | 15.875        | 19.05 | 14.27 | 41.28  | 66.68 | 38.1  | 21.30 | 28.58          | 5/8-18                   | 15° | 31 | 0.17                     |                    |
| PM 12 G           | PML 12 G         | 19.05         | 22.23 | 17.45 | 44.45  | 73.03 | 44.45 | 24.83 | 32.32          | 3/4-16                   | 12° | 39 | 0.26                     |                    |

# 杆端关节轴承 KF. 系列

## ROD ENDS BEARINGS KF. SERIES

3-PIECE, METAL TO METAL, HEAVY

需维护、重载荷型，英制尺寸 Requiring maintenance, heavy duty, inch dimensions



|                              |                          |                          |
|------------------------------|--------------------------|--------------------------|
| 壳体Housing                    | 内圈Inner ring             | 伸出杆Stud                  |
| 碳钢Carbon steel               | 轴承钢Bearing steel         | 轴承钢Bearing steel         |
| 镀锌Zinc plated                | 热处理Heat treated:HRC58-64 | 热处理Heat treated:HRC54-60 |
|                              | 磷化Phosphating            | 磷化Phosphating            |
| 摩擦副Sliding contact surfaces: |                          | 钢/钢 Steel/Steel          |

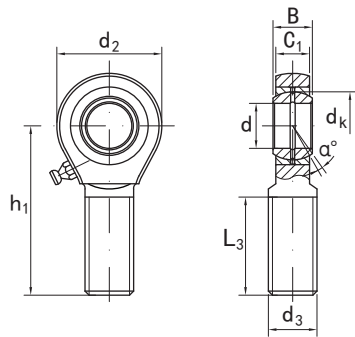
| 型号 Part No.    |               | 尺寸 Dimensions |                       |        |                |                |                |                |                |                    |                |       | mm  | 载荷 Load ratings kN | 重量 Weight kg |
|----------------|---------------|---------------|-----------------------|--------|----------------|----------------|----------------|----------------|----------------|--------------------|----------------|-------|-----|--------------------|--------------|
| 右螺纹 Right hand | 左螺纹 Left hand | d             | d <sub>3</sub> UNF-2B | B      | C <sub>1</sub> | L <sub>5</sub> | d <sub>2</sub> | d <sub>5</sub> | h <sub>1</sub> | L <sub>3</sub> min | d <sub>k</sub> | W     |     |                    |              |
| KF 20-1        | KFL 20-1      | 31.75         | 1 1/4-12              | 27.762 | 23.8           | 12.7           | 69.85          | 41.28          | 104.8          | 53.98              | 45.59          | 38.1  | 3.5 | 197.91             | 0.964        |
| KF 24-1        | KFL 24-1      | 38.1          | 1 1/2-12              | 33.325 | 28.575         | 22.23          | 88.9           | 57.15          | 136.5          | 66.68              | 54.74          | 50.8  | 3.2 | 288.06             | 2.95         |
| KF 32-1        | KFL 32-1      | 50.8          | 2-12                  | 44.45  | 38.1           | 52.37          | 127            | 79.38          | 203.2          | 101.6              | 73.03          | 69.85 | 3   | 682.82             | 6.8          |

# 杆端关节轴承 KM.. 系列

## ROD ENDS BEARINGS KM.. SERIES

3-PIECE, METAL TO METAL, HEAVY

需维护、重载荷型, 英制尺寸 Requiring maintenance, heavy duty, inch dimensions



| 壳体 Housing                    | 内圈 Inner ring              | 伸出杆 Stud                   |
|-------------------------------|----------------------------|----------------------------|
| 碳钢 Carbon steel               | 轴承钢 Bearing steel          | 轴承钢 Bearing steel          |
| 镀锌 Zinc plated                | 热处理 Heat treated: HRC58-64 | 热处理 Heat treated: HRC54-60 |
|                               | 磷化 Phosphating             | 磷化 Phosphating             |
| 摩擦副 Sliding contact surfaces: |                            | 钢/钢 Steel/Steel            |

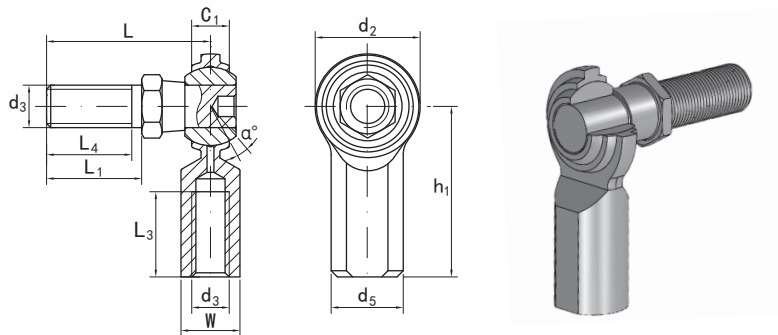
| 型号 Part No.    |               | 尺寸 Dimensions |                   |        |                |                |                |                    |                |     | mm     | 载荷 Load ratings kN | 重量 Weight kg |
|----------------|---------------|---------------|-------------------|--------|----------------|----------------|----------------|--------------------|----------------|-----|--------|--------------------|--------------|
| 右螺纹 Right hand | 左螺纹 Left hand | d             | d <sub>3</sub> 3A | B      | C <sub>1</sub> | d <sub>2</sub> | h <sub>1</sub> | L <sub>3</sub> min | d <sub>k</sub> | α ≈ |        |                    |              |
| KM 20-1        | KML 20-1      | 31.75         | 1 1/4-12          | 27.762 | 23.8           | 69.85          | 104.8          | 53.98              | 45.59          | 3.5 | 197.91 | 1.09               |              |
| KM 24-1        | KML 24-1      | 38.1          | 1 1/2-12          | 33.325 | 28.575         | 88.9           | 136.5          | 76.2               | 54.74          | 3.2 | 288.06 | 2.15               |              |
| KM 32-1        | KML 32-1      | 50.8          | 2-12              | 44.45  | 38.1           | 127            | 203.2          | 114.3              | 73.03          | 3   | 682.82 | 6.46               |              |

带伸出杆杆端关节轴承 **CF..Y,CF..YS** 系列  
**ROD ENDS WITH STUDS CF..Y,CF..YS SERIES**

**KGBAL**®

2-PIECE,METAL TO METAL

需维护型, 英制尺寸 Requiring maintenance,inch dimensions



| 壳体Housing                    | 内圈Inner ring             | 伸出杆Stud         |
|------------------------------|--------------------------|-----------------|
| 碳钢Carbon steel               | 轴承钢Bearing steel         | 碳钢Carbon steel  |
| 镀锌Zinc plated                | 热处理Heat treated:HRC57-61 | 镀锌Zinc plated   |
|                              | 镀铬Hard chrome plated     |                 |
| 摩擦副Sliding contact surfaces: |                          | 钢/钢 Steel/Steel |

| 型号 Part No.       |                  | 尺寸 Dimensions            |       |                |                |                |                       |       |                |                |                |        | mm     | 载荷<br>Load ratings<br>kN | 重量<br>Weight<br>kg |
|-------------------|------------------|--------------------------|-------|----------------|----------------|----------------|-----------------------|-------|----------------|----------------|----------------|--------|--------|--------------------------|--------------------|
| 右螺纹<br>Right hand | 左螺纹<br>Left hand | d <sub>3</sub><br>UNF-2B | w     | C <sub>1</sub> | d <sub>2</sub> | h <sub>1</sub> | L <sub>3</sub><br>min | L     | L <sub>1</sub> | L <sub>4</sub> | d <sub>5</sub> | α<br>≈ |        |                          |                    |
| <b>CF 3 Y*</b>    | <b>CFL 3 Y*</b>  | 10-32                    | 7.92  | 5.94           | 15.88          | 26.97          | 12.7                  | 25.4  | 12.7           | 11.1           | 10.31          | 10     | 9.427  | 0.023                    |                    |
| <b>CF 4 Y</b>     | <b>CFL 4 Y</b>   | 1/4-28                   | 9.53  | 6.35           | 19.05          | 33.32          | 17.45                 | 26.19 | 14.27          | 12.7           | 11.91          | 13.5   | 14.269 | 0.027                    |                    |
| <b>CF 5 Y</b>     | <b>CFL 5 Y</b>   | 5/16-24                  | 11.1  | 7.92           | 22.23          | 34.93          | 17.45                 | 30.96 | 17.45          | 15.06          | 12.7           | 11     | 17.009 | 0.05                     |                    |
| <b>CF 6 Y</b>     | <b>CFL 6 Y</b>   | 3/8-24                   | 14.27 | 9.12           | 25.4           | 41.28          | 20.62                 | 39.67 | 23.01          | 20.62          | 17.45          | 11     | 22.627 | 0.077                    |                    |
| <b>CF 7 Y</b>     | <b>CFL 7 Y</b>   | 7/16-20                  | 15.88 | 10.31          | 28.58          | 46.02          | 23.8                  | 44.45 | 26.97          | 23.8           | 19.05          | 10.5   | 28.400 | 0.122                    |                    |
| <b>CF 8 Y</b>     | <b>CFL 8 Y</b>   | 1/2-20                   | 19.05 | 11.5           | 33.32          | 53.98          | 26.97                 | 50.8  | 28.58          | 25.4           | 22.23          | 10     | 40.459 | 0.181                    |                    |
| <b>CF 10 Y</b>    | <b>CFL 10 Y</b>  | 5/8-18                   | 22.23 | 12.29          | 38.1           | 63.5           | 34.93                 | 63.5  | 38.1           | 34.93          | 25.4           | 13     | 43.203 | 0.308                    |                    |
| <b>CF 12 Y</b>    | <b>CFL 12 Y</b>  | 3/4-16                   | 25.4  | 15.06          | 44.45          | 73.03          | 39.67                 | 76.2  | 46.02          | 41.28          | 28.58          | 12     | 63.193 | 0.504                    |                    |

——带“\*”的型号均不配油孔和油杯, 其余若需配油杯, 请用**CF..YS**的代号。

——其中负荷值仅适用于不带油杯的情况。

——Add "S" for grease nipple, example:CF 6 YS, CFL 6 YS.

Grease fittings not available for sizes marked "\*".

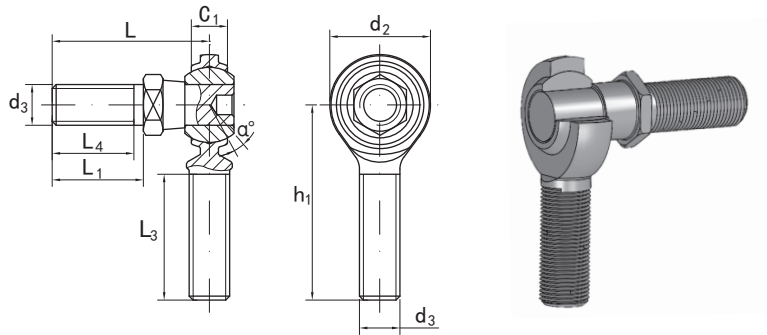
——Load ratings apply only to rod ends without grease fittings,for load ratings with fitting,please consult KGBAL.

带伸出杆杆端关节轴承 **CM..Y,CM..YS** 系列  
**ROD ENDS WITH STUDS CM..Y,CM..YS SERIES**

**KGBAL**®

2-PIECE,METAL TO METAL

需维护型, 英制尺寸 Requiring maintenance,inch dimensions



| 壳体Housing                    | 内圈Inner ring             | 伸出杆Stud         |
|------------------------------|--------------------------|-----------------|
| 碳钢Carbon steel               | 轴承钢Bearing steel         | 碳钢Carbon steel  |
| 镀锌Zinc plated                | 热处理Heat treated:HRC57-61 | 镀锌Zinc plated   |
|                              | 镀铬Hard chrome plated     |                 |
| 摩擦副Sliding contact surfaces: |                          | 钢/钢 Steel/Steel |

| 型号 Part No.       |                  | 尺寸 Dimensions            |                |                |                |                       |       |                |                |        | mm     | 载荷<br>Load ratings<br>kN | 重量<br>Weight<br>kg |
|-------------------|------------------|--------------------------|----------------|----------------|----------------|-----------------------|-------|----------------|----------------|--------|--------|--------------------------|--------------------|
| 右螺纹<br>Right hand | 左螺纹<br>Left hand | d <sub>3</sub><br>UNF-3A | C <sub>1</sub> | d <sub>2</sub> | h <sub>1</sub> | L <sub>3</sub><br>min | L     | L <sub>1</sub> | L <sub>4</sub> | α<br>≈ |        |                          |                    |
| <b>CM 3 Y*</b>    | <b>CML 3 Y*</b>  | 10-32                    | 5.94           | 15.88          | 31.75          | 19.05                 | 25.4  | 12.7           | 11.1           | 10     | 5.355  | 0.018                    |                    |
| <b>CM 4 Y*</b>    | <b>CML 4 Y*</b>  | 1/4-28                   | 6.35           | 19.05          | 39.67          | 25.4                  | 26.19 | 14.27          | 12.7           | 13.5   | 9.839  | 0.023                    |                    |
| <b>CM 5 Y*</b>    | <b>CML 5 Y*</b>  | 5/16-24                  | 7.92           | 22.23          | 47.63          | 31.75                 | 30.96 | 17.45          | 15.06          | 11     | 15.910 | 0.045                    |                    |
| <b>CM 6 Y</b>     | <b>CML 6 Y</b>   | 3/8-24                   | 9.12           | 25.4           | 49.23          | 31.75                 | 39.67 | 23.01          | 20.62          | 11     | 22.542 | 0.068                    |                    |
| <b>CM 7 Y</b>     | <b>CML 7 Y</b>   | 7/16-20                  | 10.31          | 28.58          | 53.98          | 34.93                 | 44.45 | 26.97          | 23.8           | 10.5   | 28.223 | 0.109                    |                    |
| <b>CM 8 Y</b>     | <b>CML 8 Y</b>   | 1/2-20                   | 11.5           | 33.32          | 61.93          | 38.1                  | 50.8  | 25.58          | 25.4           | 10     | 37.087 | 0.159                    |                    |
| <b>CM 10 Y</b>    | <b>CML 10 Y</b>  | 5/8-18                   | 12.29          | 38.1           | 66.68          | 41.28                 | 63.5  | 38.1           | 34.93          | 13     | 43.023 | 0.277                    |                    |
| <b>CM 12 Y</b>    | <b>CML 12 Y</b>  | 3/4-16                   | 15.06          | 44.45          | 73.03          | 44.45                 | 76.2  | 46.02          | 41.28          | 12     | 63.193 | 0.467                    |                    |

—带“\*”的型号均不配油孔和油杯, 其余若需配油杯, 请用**CM..YS**的代号。

—其中负荷值仅适用于不带油杯的情况。

—Add "S" for grease nipple, example: **CM 6 YS, CML 6 YS.**

**Grease fittings not available for sizes marked"\*".**

—Load ratings apply only to rod ends without grease fittings,for load ratings with fitting, please consult **KGBAL.**