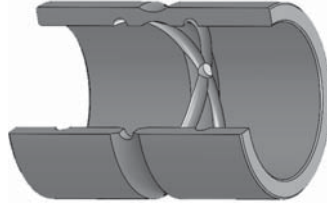
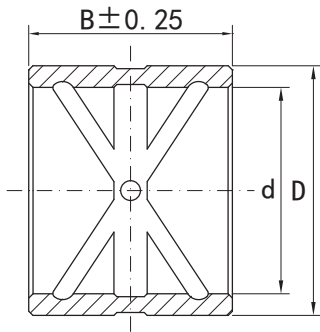


MATERIAL

GCr15/42CrMo/C45/20Cr/40Cr
HRC58-66

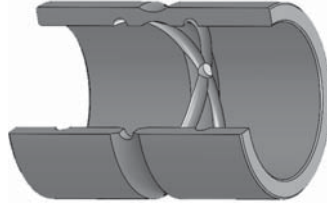
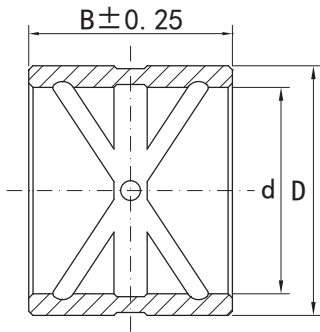
Part NO.	Dimensions				Weight		
	d		D		mm	kg	lbs
A 324162	32	+0.80 +0.50	41	+0.09 +0.05	62	0.238	0.52
A 3241110	32	+0.80 +0.50	41	+0.09 +0.05	110	0.415	0.91
A 506062	50	+0.21 +0.14	60	+0.05 +0.03	62	0.402	0.88
A 5160100	51	+0.16 +0.08	60	+0.05 +0.03	100	0.732	1.61
A 637876	63	+0.85 +0.75	78	+0.13 +0.08	76	0.852	1.87
A 607563	60	+0.186 +0.140	75	+0.121 +0.102	63	0.775	1.71
A 6075100	60	+0.334 +0.267	75	+0.121 +0.102	100	1.213	2.67
A 658060	65	+0.186 +0.140	80	+0.121 +0.102	60	0.780	1.72
A 658090	65	+0.327 +0.260	80	+0.121 +0.102	90	0.985	2.17
A 708575	70	+0.196 +0.150	85	+0.146 +0.124	75	1.050	2.31
A 759090	75	+0.196 +0.150	90	+0.146 +0.124	90	1.200	2.64
A 809595	80	+0.342 +0.283	95	+0.146 +0.124	95	1.355	2.98



MATERIAL

GCr15/42CrMo/C45/20Cr/40Cr
HRC58-66

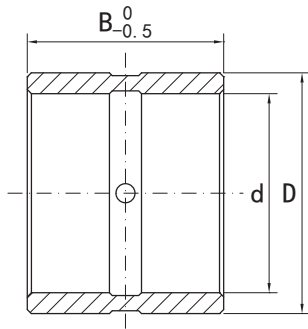
Part NO.	Dimensions			Weight			
	d	D	B	kg	lbs		
B 324230	32	+0.139 +0.119	42	+0.059 +0.034	30	0.135	0.30
B 354540	35	+0.173 +0.138	45	+0.068 +0.043	40	0.195	0.43
B 405038	40	+0.159 +0.120	50	+0.086 +0.070	38	0.205	0.45
B 405040	40	+0.139 +0.119	50	+0.059 +0.034	40	0.215	0.47
B 455563	45	+0.169 +0.130	55	+0.106 +0.087	63	0.383	0.84
B 455573	45	+0.169 +0.130	55	+0.106 +0.087	73	0.452	0.99
B 506048	50	+0.169 +0.130	60	+0.106 +0.087	48	0.320	0.70
B 506053	50	+0.323 +0.256	60	+0.106 +0.087	53	0.355	0.78
B 506063	50	+0.169 +0.130	60	+0.106 +0.087	63	0.425	0.94
B 556553	55	+0.305 +0.237	65	+0.106 +0.087	53	0.390	0.86
B 556558	55	+0.134 +0.060	65	+0.078 +0.059	58	0.425	0.94
B 557060	55	+0.186 +0.140	70	+0.121 +0.102	60	0.440	0.97
B 557075	55	+0.334 +0.267	70	+0.121 +0.102	75	0.820	1.80
B 557090	55	+0.334 +0.267	70	+0.121 +0.102	90	0.955	2.10
B 607032	60	+0.166 +0.146	70	+0.073 +0.043	32	0.553	1.22
B 607038	60	+0.186 +0.140	70	+0.121 +0.102	38	0.255	0.56
B 607548	60	+0.186 +0.140	75	+0.121 +0.102	48	0.550	1.21



MATERIAL

GCr15/42CrMo/C45/20Cr/40Cr
HRC58-66

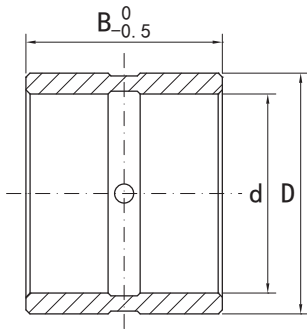
Part NO.	Dimensions			Weight			
	mm		mm		kg	lbs	
	d	D	B				
B 607563	60	+0.186 +0.140	75	+0.121 +0.102	63	0.775	1.71
B 6075100	60	+0.334 +0.267	75	+0.121 +0.102	100	1.213	2.67
B 658060	65	+0.186 +0.140	80	+0.121 +0.102	60	0.780	1.72
B 658090	65	+0.327 +0.260	80	+0.121 +0.102	90	0.985	2.17
B 708575	70	+0.196 +0.150	85	+0.146 +0.124	75	1.050	2.31
B 759090	75	+0.196 +0.150	90	+0.146 +0.124	90	1.200	2.64
B 809595	80	+0.342 +0.283	95	+0.146 +0.124	95	1.355	2.98



MATERIAL

GCr15/42CrMo/C45/20Cr/40Cr
HRC58-66

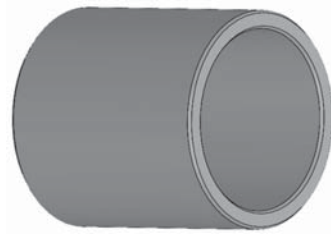
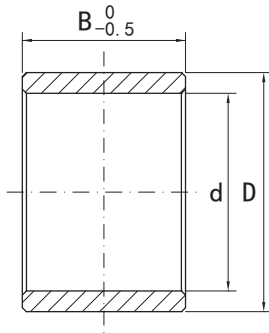
Part NO.	Dimensions				Weight		
	d		D		B	kg	lbs
G 303825	30	+0.065 +0.025	38	+0.045 +0.032	25	0.132	0.29
G 303840	30	+0.065 +0.025	38	+0.045 +0.032	40	0.210	0.46
G 354550	35	+0.21 +0.13	45	+0.05 +0.03	50	0.245	0.54
G 354570	35	+0.21 +0.13	45	+0.05 +0.03	70	0.343	0.75
G 384850	38	+0.159 +0.120	48	+0.086 +0.070	50	0.262	0.58
G 455555	45	+0.19 +0.13	55	+0.05 +0.03	55	0.345	0.76
G 506028	50	+0.21 +0.14	60	+0.05 +0.03	28	0.185	0.41
G 506052	50	+0.21 +0.14	60	+0.05 +0.03	52	0.340	0.75
G 506062	50	+0.21 +0.14	60	+0.05 +0.03	62	0.415	0.91
G 5160100	51	+0.16 +0.08	60	+0.05 +0.03	100	0.650	1.43
G 556556	55	+0.08 +0.04	65	+0.05 +0.03	56	0.377	0.83
G 607035	60	+0.22 +0.15	70	+0.045 +0.032	35	0.250	0.55
G 607062	60	+0.14 +0.06	70	+0.07 +0.05	62	0.476	1.05
G 607088	60	+0.14 +0.06	70	+0.07 +0.05	88	0.670	1.47
G 6475100	64	-0.003 -0.103	75	+0.05 +0.03	100	0.897	1.97
G 6475140	64	-0.023 -0.103	75	+0.05 +0.03	140	1.270	2.79
G 657562	65	+0.22 +0.15	75	+0.05 +0.03	62	0.520	1.14



MATERIAL

GCr15/42CrMo/C45/20Cr/40Cr
HRC58-66

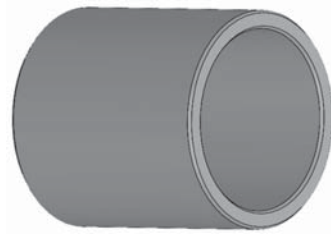
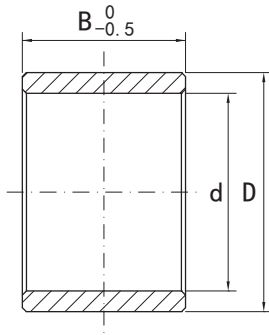
Part NO.	Dimensions				mm	Weight	
	d		D		B	kg	lbs
G 657572	65	+0.22 +0.15	75	+0.05 +0.03	72	0.604	1.33
G 758566	75	+0.22 +0.15	85	+0.06 +0.04	66	0.650	1.43
G 758585	75	+0.22 +0.15	85	+0.06 +0.04	85	0.836	1.84
G 90100160	90	+0.26 +0.17	100	+0.06 +0.04	160	1.860	4.09
G 110120180	110	+0.27 +0.18	120	+0.06 +0.04	180	0.250	0.55



MATERIAL

GCr15/42CrMo/C45/20Cr/40Cr

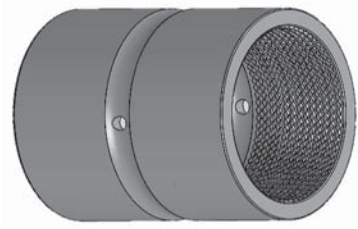
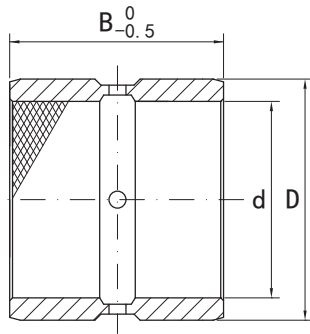
Part NO.	Dimensions			Weight	
	d	D	B	kg	lbs
K 303840	30 +0.065 +0.025	38 +0.045 +0.032	40	0.212	0.47
K 354240	35 +0.159 +0.120	42 +0.063 +0.038	40	0.130	0.29
K 354545	35 +0.065 +0.025	45 +0.045 +0.032	45	0.215	0.47
K 405025	40 +0.190 +0.130	50 +0.045 +0.032	25	0.133	0.29
K 405027	40 +0.115 +0.075	50 +0.045 +0.032	27	0.147	0.32
K 405040	40 +0.115 +0.075	50 +0.045 +0.032	40	0.220	0.48
K 405042	40 +0.065 +0.025	50 +0.045 +0.032	42	0.230	0.51
K 455528	45 +0.220 +0.180	55 +0.050 +0.030	28	0.170	0.37
K 455542	45 +0.080 +0.050	55 +0.060 +0.040	42	0.255	0.56
K 455547	45 -0.100 -0.120	55 +0.050 +0.030	47	0.285	0.63
K 506030	50 +0.160 +0.130	60 +0.050 +0.030	30	0.203	0.45
K 506040	50 +0.160 +0.130	60 +0.050 +0.030	40	0.270	0.59
K 506050	50 +0.150 +0.050	60 +0.050 +0.030	50	0.337	0.74
K 516238	51 -0.070 -0.090	62 -0.130 -0.150	38	0.290	0.64
K 607040	60 +0.160 +0.140	70 +0.050 +0.030	40	0.300	0.66
K 607540	60 +0.060 +0.040	75 -0.008 -0.024	40	0.615	1.35
K 657536	65 +0.140 +0.120	75 -0.160 -0.180	36	0.300	0.66



MATERIAL

GCr15/42CrMo/C45/20Cr/40Cr

Part NO.	Dimensions			Weight	
	mm			kg	lbs
	d	D	B		
K 657585	65 +0.220 +0.150	75 +0.050 +0.030	85	0.720	1.58
K 7585102	75 +0.220 +0.150	85 +0.060 +0.040	102	1.000	2.20
K 90100105	90 +0.260 +0.170	100 +0.060 +0.040	105	1.225	2.70
K 90100119	90 +0.260 +0.170	100 +0.060 +0.040	119	1.390	3.06
K 11012080	110 +0.270 +0.180	120 +0.060 +0.040	80	1.130	2.49
K 120130145	120 +0.270 +0.180	130 +0.068 +0.043	145	2.232	4.91



MATERIAL

42CrMo/20Cr/40Cr
HV0.1 ≥ 550

Part NO.	Dimensions			Weight	
	mm			kg	lbs
	d	D	B		
L 809560	80 +0.280 +0.210	95 +0.210 +0.170	60	1.05	2.31
L 809580	80 +0.196 +0.150	95 +0.159 +0.124	80	1.25	2.75
L 9010582	90 +0.280 +0.210	105 +0.210 +0.170	82	1.45	3.19
L 9010590	90 +0.434 +0.380	105 +0.179 +0.144	90	1.60	3.52
L 9010592	90 +0.434 +0.380	105 +0.179 +0.144	92	1.60	3.52
L 9011090	90 +0.224 +0.170	110 +0.179 +0.144	90	2.05	4.51
L 10012090	100 +0.224 +0.170	120 +0.179 +0.144	90	2.24	4.93
L 100120120	100 +0.224 +0.170	120 +0.179 +0.144	120	3.16	6.95
L 100130135	100 +0.234 +0.180	130 +0.210 +0.170	135	5.53	12.17
L 130160170	130 +0.263 +0.200	160 +0.230 +0.190	170	8.55	18.81