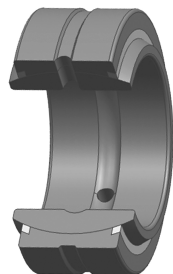
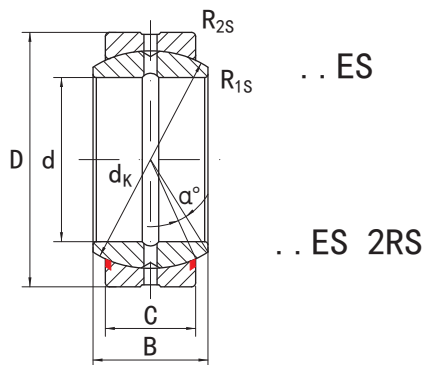


■ 向心关节轴承 **GE..E(S),GE..ES 2RS** 系列

KGBAL®

RADIAL SPHERICAL PLAIN BEARINGS GE..E(S),GE..ES 2RS SERIES

需维护 Requiring maintenance



内圈 Inner ring	外圈 Outer ring
轴承钢 Bearing steel	轴承钢 Bearing steel
热处理 Heat treated: HRC58-64	热处理 Heat treated: HRC54-60
磷化 Phosphating	磷化 Phosphating
摩擦副 Sliding contact surfaces: 钢/钢 Steel/Steel	

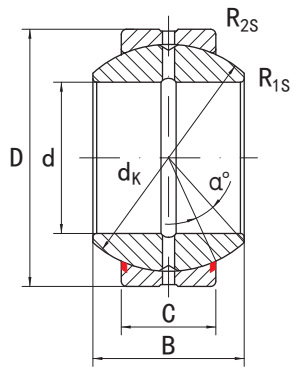
型号 Part NO.	尺寸 Dimensions mm								载荷 Load ratings kN		重量 Weight kg
	d	D	B	C	dk	R _{1s} min	R _{2s} min	α ≈	动载荷 Dynamic	静载荷 Static	
GE 5 E	5	14	6	4	10	0.3	0.3	13	3.4	17	0.005
GE 6 E	6	14	6	4	10	0.3	0.3	13	3.4	17	0.004
GE 8 E	8	16	8	5	13	0.3	0.3	15	5.5	27.5	0.007
GE 10 E	10	19	9	6	16	0.3	0.3	12	8.15	40.5	0.011
GE 12 E	12	22	10	7	18	0.3	0.3	11	10.8	54	0.016
GE 15 ES GE 15 ES 2RS	15	26	12	9	22	0.3	0.3	8	17	85	0.026
GE 16 ES GE 16 ES 2RS	16	30	14	10	25	0.3	0.3	10	21.2	106	0.045
GE 17 ES GE 17 ES 2RS	17	30	14	10	25	0.3	0.3	10	21.2	106	0.041
GE 20 ES GE 20 ES 2RS	20	35	16	12	29	0.3	0.3	9	30	146	0.061
GE 25 ES GE 25 ES 2RS	25	42	20	16	35.5	0.6	0.6	7	48	240	0.11
GE 30 ES GE 30 ES 2RS	30	47	22	18	40.7	0.6	0.6	6	62	310	0.14
GE 35 ES GE 35 ES 2RS	35	55	25	20	47	0.6	1	6	80	400	0.22
GE 40 ES GE 40 ES 2RS	40	62	28	22	53	0.6	1	7	100	500	0.30
GE 45 ES GE 45 ES 2RS	45	68	32	25	60	0.6	1	7	127	640	0.41
GE 50 ES GE 50 ES 2RS	50	75	35	28	66	0.6	1	6	156	780	0.53
GE 55 ES GE 55 ES 2RS	55	85	40	32	74	0.6	1	7	200	1000	0.94
GE 60 ES GE 60 ES 2RS	60	90	44	36	80	1	1	6	245	1220	1.00
GE 70 ES GE 70 ES 2RS	70	105	49	40	92	1	1	6	315	1560	1.50
GE 80 ES GE 80 ES 2RS	80	120	55	45	105	1	1	6	400	2000	2.20
GE 90 ES GE 90 ES 2RS	90	130	60	50	115	1	1	5	490	2450	2.70
GE 100 ES GE 100 ES 2RS	100	150	70	55	130	1	1	7	610	3050	4.30
GE 110 ES GE 110 ES 2RS	110	160	70	55	140	1	1	6	655	3250	4.70
GE 120 ES GE 120 ES 2RS	120	180	85	70	160	1	1	6	950	4750	8.00
GE 140 ES GE 140 ES 2RS	140	210	90	70	180	1	1	7	1080	5400	11.00
GE 160 ES GE 160 ES 2RS	160	230	105	80	200	1	1	8	1360	6800	14.00
GE 180 ES GE 180 ES 2RS	180	260	105	80	225	1	1	6	1530	7650	18.50
GE 200 ES GE 200 ES 2RS	200	290	130	100	250	1.1	1.1	7	2120	10600	28.00
GE 220 ES GE 220 ES 2RS	220	320	135	100	275	1.1	1.1	8	2320	11600	35.51
GE 240 ES GE 240 ES 2RS	240	340	140	100	300	1.1	1.1	8	2550	12700	39.91
GE 260 ES GE 260 ES 2RS	260	370	150	110	325	1.1	1.1	7	3030	15190	51.54
GE 280 ES GE 280 ES 2RS	280	400	155	120	350	1.1	1.1	6	3570	17850	65.06
GE 300 ES GE 300 ES 2RS	300	430	165	120	375	1.1	1.1	7	3800	19100	78.07

■ 向心关节轴承 **GEG..E(S),GEG..ES 2RS** 系列

KGBAL®

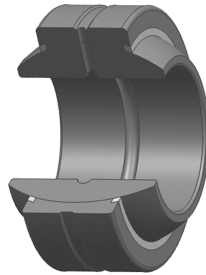
RADIAL SPHERICAL PLAIN BEARINGS GEG..E(S),GEG..ES 2RS SERIES

需维护、重载荷型 Requiring maintenance, heavy-duty



.. ES

.. ES 2RS



内圈 Inner ring	外圈 Outer ring
轴承钢 Bearing steel	轴承钢 Bearing steel
热处理 Heat treated: HRC58-64	热处理 Heat treated: HRC54-60
磷化 Phosphating	磷化 Phosphating
摩擦副 Sliding contact surfaces: 钢/钢 Steel/Steel	

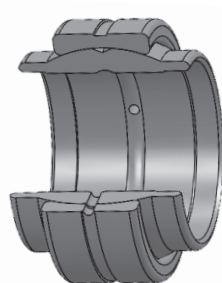
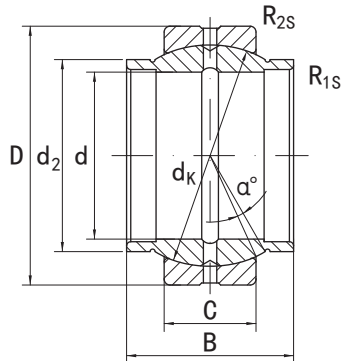
型号 Part NO.	尺寸 Dimensions								载荷 Load ratings		重量 Weight kg
	mm								kN		
	d	D	B	C	dk	R _{1s} min	R _{2s} min	α ≈	动载荷 Dynamic	静载荷 Static	
GEG 6 E	6	16	9	5	13	0.3	0.3	21	5.5	27.5	0.008
GEG 8 E	8	19	11	6	16	0.3	0.3	21	8.15	40.5	0.014
GEG 10 E	10	22	12	7	18	0.3	0.3	18	10.8	54	0.020
GEG 12 E	12	26	15	9	22	0.3	0.3	18	17	85	0.034
GEG 15 ES GEG 15 ES 2RS	15	30	16	10	25	0.3	0.3	16	21.2	106	0.046
GEG 17 ES GEG 17 ES 2RS	17	35	20	12	29	0.3	0.3	19	30	146	0.077
GEG 20 ES GEG 20 ES 2RS	20	42	25	16	35.5	0.6	0.6	17	48	240	0.15
GEG 25 ES GEG 25 ES 2RS	25	47	28	18	40.7	0.6	0.6	17	62	310	0.19
GEG 30 ES GEG 30 ES 2RS	30	55	32	20	47	0.6	1	17	80	400	0.29
GEG 35 ES GEG 35 ES 2RS	35	62	35	22	53	0.6	1	16	100	500	0.38
GEG 40 ES GEG 40 ES 2RS	40	68	40	25	60	0.6	1	17	127	640	0.54
GEG 45 ES GEG 45 ES 2RS	45	75	43	28	66	0.6	1	15	156	780	0.68
GEG 50 ES GEG 50 ES 2RS	50	90	56	36	80	0.6	1	17	245	1220	1.14
GEG 60 ES GEG 60 ES 2RS	60	105	63	40	92	1	1	17	315	1560	2.00
GEG 70 ES GEG 70 ES 2RS	70	120	70	45	105	1	1	16	400	2000	2.90
GEG 80 ES GEG 80 ES 2RS	80	130	75	50	115	1	1	14	490	2450	3.50
GEG 90 ES GEG 90 ES 2RS	90	150	85	55	130	1	1	15	610	3050	5.40
GEG 100 ES GEG 100 ES 2RS	100	160	85	55	140	1	1	14	655	3250	5.90
GEG 110 ES GEG 110 ES 2RS	110	180	100	70	160	1	1	12	950	4750	9.60
GEG 120 ES GEG 120 ES 2RS	120	210	115	70	180	1	1	16	1080	5400	15.10
GEG 140 ES GEG 140 ES 2RS	140	230	130	80	200	1	1	16	1360	6800	19.01
GEG 160 ES GEG 160 ES 2RS	160	260	135	80	225	1	1.1	16	1530	7650	24.70
GEG 180 ES GEG 180 ES 2RS	180	290	155	100	250	1.1	1.1	14	2120	10600	35.40
GEG 200 ES GEG 200 ES 2RS	200	320	165	100	270	1.1	1.1	15	2320	11600	45.28
GEG 220 ES GEG 220 ES 2RS	220	340	175	100	300	1.1	1.1	16	2550	12700	51.12
GEG 240 ES GEG 240 ES 2RS	240	370	190	110	325	1.1	1.1	15	3030	15190	65.12
GEG 260 ES GEG 260 ES 2RS	260	400	205	120	350	1.1	1.1	15	3570	17850	82.44
GEG 280 ES GEG 280 ES 2RS	280	430	210	120	375	1.1	1.1	15	3800	19100	97.21

向心关节轴承 GE..LO 系列



RADIAL SPHERICAL PLAIN BEARINGS GE..LO SERIES

需维护 Requiring maintenance



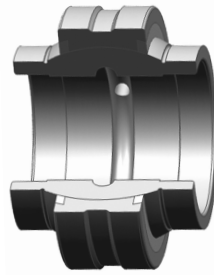
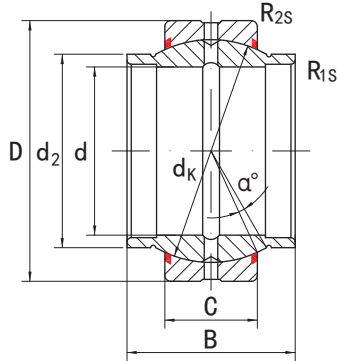
内圈 Inner ring	外圈 Outer ring
轴承钢 Bearing steel	轴承钢 Bearing steel
热处理 Heat treated: HRC58-64	热处理 Heat treated: HRC54-60
磷化 Phosphating	磷化 Phosphating
摩擦副 Sliding contact surfaces: 钢/钢 Steel/Steel	

型号 Part No.	尺寸 Dimensions									载荷 Load ratings		重量 Weight kg
	mm									kN		
	d	d ₂	D	B	C	d _k	R _{1s} min	R _{2s} min	α ≈	动载荷 Dynamic	静载荷 Static	
GE 12 LO	12	15.5	22	12	7	18	0.3	0.3	4	10	54	0.017
GE 15 LO	15	18.5	26	15	9	22	0.3	0.3	5	16	84	0.028
GE 16 LO	16	20	28	16	9	23	0.3	0.3	4	17.6	88	0.035
GE 17 LO	17	21	30	17	10	25	0.3	0.3	7	21	106	0.043
GE 20 LO	20	25	35	20	12	29	0.3	0.3	4	30	146	0.07
GE 25 LO	25	30.5	42	25	16	35.5	0.6	0.6	4	48	240	0.12
GE 30 LO	30	34	47	30	18	40.7	0.6	0.6	4	62	310	0.17
GE 32 LO	32	37	52	32	18	44	0.6	1	4	67	335	0.21
GE 35 LO	35	40	55	35	20	47	0.6	1	4	79	399	0.25
GE 40 LO	40	46	62	40	22	53	0.6	1	4	100	500	0.34
GE 45 LO	45	52	68	45	25	60	0.6	1	4	127	637	0.48
GE 50 LO	50	57	75	50	28	66	0.6	1	4	156	780	0.56
GE 60 LO	60	68	90	60	36	80	1	1	4	245	1220	1.15
GE 63 LO	63	71.5	95	63	36	83	1	1	4	255	1270	1.3
GE 70 LO	70	78	105	70	40	92	1	1	4	315	1560	1.7
GE 80 LO	80	91	120	80	45	105	1	1	4	400	2000	2.4
GE 90 LO	90	99	130	90	50	115	1	1	4	488	2440	3.2
GE 100 LO	100	113	150	100	55	130	1	1	4	607	3030	4.8
GE 110 LO	110	124	160	110	55	140	1	1	4	654	3270	5.8
GE 125 LO	125	138	180	125	70	160	1	1	4	950	4750	8.5
GE 160 LO	160	177	230	160	80	200	1	1	4	1360	6800	16.5
GE 200 LO	200	221	290	200	100	250	1.1	1.1	4	2120	10600	32.1
GE 250 LO	250	317	400	250	120	350	1.1	1.1	4	3750	17800	99.1
GE 320 LO	320	405	520	320	160	450	1.1	1.1	4	6200	30500	225.0

向心关节轴承 GE..HO 2RS 系列

RADIAL SPHERICAL PLAIN BEARINGS GE..HO 2RS SERIES

需维护 Requiring maintenance



内圈 Inner ring	外圈 Outer ring
轴承钢 Bearing steel	轴承钢 Bearing steel
热处理 Heat treated: HRC58-64	热处理 Heat treated: HRC54-60
磷化 Phosphating	磷化 Phosphating
摩擦副 Sliding contact surfaces: 钢/钢 Steel/Steel	

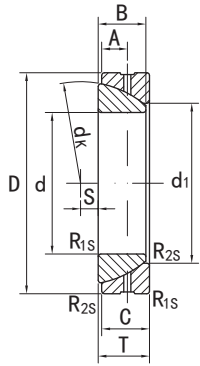
型号 Part No.	尺寸 Dimensions									载荷 Load ratings		重量 Weight kg
	mm									kN		
	d	d ₂	D	B	C	d _k	R _{1s} min	R _{2s} min	α ≈	动载荷 Dynamic	静载荷 Static	
GE 17 HO 2RS	17	21	30	21	10	25	0.3	0.3	3	21.2	106	0.04
GE 20 HO 2RS	20	24	35	24	12	29	0.3	0.3	3	30	146	0.07
GE 25 HO 2RS	25	29	42	29	16	35.5	0.6	0.6	3	48	240	0.12
GE 30 HO 2RS	30	34	47	30	18	40.7	0.6	0.6	3	62	310	0.15
GE 35 HO 2RS	35	40	55	35	20	47	0.6	1	3	80	400	0.26
GE 40 HO 2RS	40	45	62	38	22	53	0.6	1	3	100	500	0.32
GE 45 HO 2RS	45	52	68	40	25	60	0.6	1	3	127	640	0.43
GE 50 HO 2RS	50	57	75	43	28	66	0.6	1	3	156	780	0.55
GE 60 HO 2RS	60	68	90	54	36	80	0.6	1	3	245	1220	1.10
GE 70 HO 2RS	70	78	105	65	40	92	0.6	1	3	315	1560	1.60
GE 80 HO 2RS	80	90	120	74	45	105	0.6	1	3	400	2000	2.50
GE 90 HO 2RS	90	99	130	80	50	115	1	1	4	488	2440	2.88
GE 100 HO 2RS	100	113	150	90	55	130	1	1	4	607	3030	4.65
GE 120 HO 2RS	120	138	180	108	70	160	1	1	4	950	4750	8.44

角接触关节轴承 **GE..SX** 系列

KGBAL®

ANGULAR CONTACT SPHERICAL PLAIN BEARINGS GE..SX SERIES

需维护 Requiring maintenance



内圈 Inner ring	外圈 Outer ring
轴承钢 Bearing steel	轴承钢 Bearing steel
热处理 Heat treated: HRC58-64	热处理 Heat treated: HRC58-64
磷化 Phosphating	磷化 Phosphating
摩擦副 Sliding contact surfaces: 钢/钢 Steel/Steel	

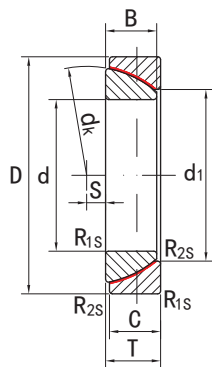
型号 Part No.	尺寸 Dimensions												载荷 Load ratings		重量 Weight kg
	mm												kN		
	d	D	T	dk	d1	B	C	S	A	R1s min	R2s min	α ≈	动载荷 Dynamic	静载荷 Static	
GE 25 SX	25	47	15	42.5	31.4	14	14	1	7.5	0.6	0.2	2.7	47.5	236	0.13
GE 28 SX	28	52	16	47	35.7	15	15	1	8	1	0.3	2.4	60	300	0.17
GE 30 SX	30	55	17	50	36.1	16	16	2	8.5	1	0.3	2.3	63	315	0.21
GE 32 SX	32	58	17	52	37.5	17	16	2	8.5	1	0.3	2.3	71	354	0.24
GE 35 SX	35	62	18	56	42.4	17	17	2	9	1	0.3	2	76.5	390	0.27
GE 40 SX	40	68	19	60	46.8	18	18	1.5	9.5	1	0.3	1.9	90	450	0.32
GE 45 SX	45	75	20	66	52.9	19	19	1.5	10	1	0.3	1.7	106	530	0.41
GE 50 SX	50	80	20	74	59.1	19	19	4	10	1	0.3	1.6	118	585	0.45
GE 55 SX	55	90	23	80	62	22	22	4	11.5	1.5	0.6	1.4	146	735	0.67
GE 60 SX	60	95	23	86	68.1	22	22	5	11.5	1.5	0.6	1.3	160	800	0.72
GE 65 SX	65	100	23	92	75.6	22	22	5	11.5	1.5	0.6	1.3	173	865	0.76
GE 70 SX	70	110	25	102	82.2	24	24	7	12.5	1.5	0.6	1.1	208	1040	1.0
GE 75 SX	75	115	25	107	84.4	25	24	7.9	12.5	1.5	0.6	1	220	1129	1.1
GE 80 SX	80	125	29	115	90.5	27	27	10	14.5	1.5	0.6	2	250	1250	1.5
GE 85 SX	85	130	29	122	94.8	29	26.5	9.4	14.5	1.5	0.6	2	284	1422	1.6
GE 90 SX	90	140	32	130	103.3	30	30	11	16	2	0.6	1.8	320	1600	2.1
GE 95 SX	95	145	32	135	104.4	32	29.5	10.8	16	2	0.6	2	335	1750	2.2
GE 100 SX	100	150	32	140	114.3	30	30	12	16	2	0.6	1.7	345	1760	2.3
GE 105 SX	105	160	35	148	113.8	35	32.5	12.3	17.5	2	0.6	2	423	2116	2.9
GE 110 SX	110	170	38	160	125.8	36	36	15	19	2.5	0.6	1.5	475	2360	3.6
GE 120 SX	120	180	38	170	135.4	36	36	17	19	2.5	0.6	1.4	510	2550	3.9
GE 130 SX	130	200	45	190	148	42	42	20	22.5	2.5	0.6	1.9	640	3200	5.9
GE 140 SX	140	210	45	200	160.6	42	42	20	22.5	2.5	0.6	1.8	680	3450	6.3
GE 150 SX	150	225	48	213	170.9	45	45	21	24	3	1	1.7	780	3900	7.7
GE 160 SX	160	240	51	225	181.4	48	48	21	25.5	3	1	1.6	900	4500	9.4
GE 170 SX	170	260	57	250	194.3	54	54	27	28.5	3	1	1.4	1100	5500	12.0
GE 180 SX	180	280	64	260	205.5	61	61	21	32	3	1	1.3	1320	6700	17.0
GE 190 SX	190	290	64	275	211.8	61	61	29	32	3	1	1.3	1370	6950	18.0
GE 200 SX	200	310	70	290	229.5	66	66	26	35	3	1	1.6	1560	7800	22.5

角接触关节轴承 **GE..SW** 系列

KGBAL®

ANGULAR CONTACT SPHERICAL PLAIN BEARINGS GE..SW SERIES

免维护 **Maintenance-free**



内圈 Inner ring	外圈 Outer ring
轴承钢 Bearing steel	轴承钢 Bearing steel
热处理 Heat treated: HRC58-64	热处理 Heat treated: HRC58-64
镀铬 Hard chrome plated	磷化 Phosphating
摩擦副 Sliding contact surfaces: 钢/PTFE 织布 Steel/PTFE fabric	

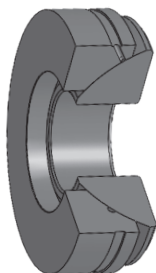
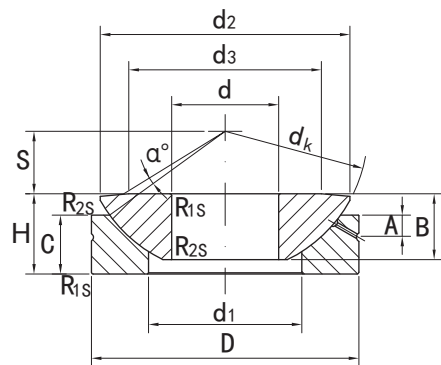
型号 Part No.	尺寸 Dimensions											载荷 Load ratings		重量 Weight kg
	mm											kN		
	d	D	T	dk	d1	B	C	S	R1s min	R2s min	α ≈	动载荷 Dynamic	静载荷 Static	
GE 25 SW	25	47	15	42.5	31.4	14	14	1	0.6	0.2	2.7	71	140	0.14
GE 28 SW	28	52	16	47	35.7	15	15	1	1	0.3	2.4	90	180	0.18
GE 30 SW	30	55	17	50	36.1	16	16	2	1	0.3	2.3	95	190	0.22
GE 32 SW	32	58	17	52	37.5	17	16	2	1	0.3	2.3	102	204	0.24
GE 35 SW	35	62	18	56	42.4	17	17	2	1	0.3	2	116	232	0.28
GE 40 SW	40	68	19	60	46.8	18	18	1.5	1	0.3	1.9	134	270	0.34
GE 45 SW	45	75	20	66	52.9	19	19	1.5	1	0.3	1.7	160	320	0.43
GE 50 SW	50	80	20	74	59.1	19	19	4	1	0.3	1.6	176	355	0.47
GE 55 SW	55	90	23	80	62	22	22	4	1.5	0.6	1.4	220	440	0.70
GE 60 SW	60	95	23	86	68.1	22	22	5	1.5	0.6	1.3	240	480	0.75
GE 65 SW	65	100	23	92	75.6	22	22	5	1.5	0.6	1.3	260	520	0.80
GE 70 SW	70	110	25	102	82.2	24	24	7	1.5	0.6	1.1	315	630	1.0
GE 75 SW	75	115	25	107	84.4	25	25	7.9	1.5	0.6	1	345	670	1.1
GE 80 SW	80	125	29	115	90.5	27	27	10	1.5	0.6	2	375	750	1.6
GE 85 SW	85	130	29	122	94.8	29	26.5	9.4	1.5	0.6	2	425	810	1.7
GE 90 SW	90	140	32	130	103.3	30	30	11	2	0.6	1.8	480	965	2.2
GE 95 SW	95	145	32	135	104.4	32	29.5	10.8	2	0.6	2	500	1000	2.3
GE 100 SW	100	150	32	140	114.3	30	30	12	2	0.6	1.7	520	1040	2.4
GE 105 SW	105	160	35	148	113.8	35	32.5	12.3	2	0.6	2	565	1250	2.9
GE 110 SW	110	170	38	160	125.8	36	36	15	2.5	0.6	1.5	710	1430	3.7
GE 120 SW	120	180	38	170	135.4	36	36	17	2.5	0.6	1.4	765	1530	4.0
GE 130 SW	130	200	45	190	148	42	42	20	2.5	0.6	1.9	965	1930	6.0
GE 140 SW	140	210	45	200	160.6	42	42	20	2.5	0.6	1.8	1020	2040	6.4
GE 150 SW	150	225	48	213	170.9	45	45	21	3	1	1.7	1180	2360	7.9
GE 160 SW	160	240	51	225	181.4	48	48	21	3	1	1.6	1340	2700	9.6
GE 170 SW	170	260	57	250	194.3	54	54	27	3	1	1.4	1660	3350	13.0
GE 180 SW	180	280	65	260	205.5	61	61	21	3	1	1.3	2000	4000	17.5
GE 190 SW	190	290	64	275	211.8	61	61	29	3	1	1.3	2080	4150	18.0
GE 200 SW	200	310	70	290	229.2	66	66	26	3	1	1.6	2360	4750	23.0

■ 推力关节轴承 **GE..AX** 系列

KGBAL®

THRUST SPHERICAL PLAIN BEARINGS GE..AX SERIES

需维护 Requiring maintenance



内圈 Inner ring	外圈 Outer ring
轴承钢 Bearing steel	轴承钢 Bearing steel
热处理 Heat treated: HRC58-64	热处理 Heat treated: HRC58-64
磷化 Phosphating	磷化 Phosphating
摩擦副 Sliding contact surfaces: 钢/钢 Steel/Steel	

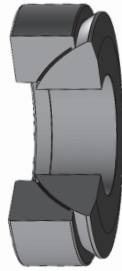
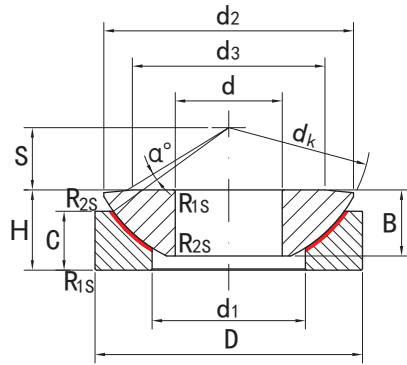
型号 Part No.	尺寸 Dimensions														载荷 Load ratings		重量 Weight kg
	mm														kN		
	d	D	H	dk	d1	d2	d3	B	C	S	A	R1s min	R2s min	α ≈	动载荷 Dynamic	静载荷 Static	
GE 10 AX	10	30	9.5	32	16.5	27.5	21	7.9	6	7	3	0.6	0.2	10	24	120	0.04
GE 12 AX	12	35	13	37	19.5	32	24	9.3	9	8	4	0.6	0.2	9	32.5	163	0.07
GE 15 AX	15	42	15	45	24	38.9	29	10.7	11	10	5	0.6	0.2	7	52	260	0.12
GE 17 AX	17	47	16	50	28	43.4	34	11.5	11.5	11	5	0.6	0.15	6	58.5	300	0.16
GE 20 AX	20	55	20	60	33.5	50	40	14.3	13	12.5	6	1	0.3	6	75	375	0.25
GE 25 AX	25	62	22.5	66	34.5	57.5	45	16	17	14	6	1	0.3	7	129	640	0.38
GE 30 AX	30	75	26	80	44	69	56	18	19.5	17.5	8	1	0.3	6	170	850	0.65
GE 35 AX	35	90	28	98	52	84	66	22	20	22	8	1	0.3	6	260	1290	1
GE 40 AX	40	105	32	114	59	98	78	27	22	24.5	9	1	0.3	6	375	1860	1.6
GE 45 AX	45	120	36.5	130	68	112	89	31	25	27.5	11	1	0.3	6	490	2450	2.4
GE 50 AX	50	130	42.5	140	69	122.5	98	33.5	32	30	10	1	0.3	5	655	3250	3.3
GE 60 AX	60	150	45	160	86	140	108	37	33	35	12.5	1	0.3	7	735	3650	4.5
GE 70 AX	70	160	50	170	95	149.5	121	40	36	35	13.5	1	0.3	6	800	4050	5.5
GE 80 AX	80	180	50	194	108	168	130	42	36	42.5	14.5	1	0.3	6	1040	5200	7
GE 100 AX	100	210	59	220	133	195.5	155	50	42	45	15	1	0.3	7	1200	6000	10.5
GE 120 AX	120	230	64	245	154	214	170	52	45	52.5	16.5	1	0.3	8	1250	6200	13
GE 140 AX	140	260	72	272	176	244	198	61	50	52.5	23	1.5	0.6	6	1630	8150	18
GE 160 AX	160	290	77	310	199	272	213	65	52	65	23	1.5	0.6	7	1900	9500	23
GE 180 AX	180	320	86	335	224	300	240	70	60	67.5	26	1.5	0.6	8	2120	10600	31
GE 200 AX	200	340	87	358	246	321	265	74	60	70	27	1.5	0.6	8	2360	11800	34

■ 推力关节轴承 GE..AW 系列



THRUST SPHERICAL PLAIN BEARINGS GE..AW SERIES

免维护 Maintenance-free



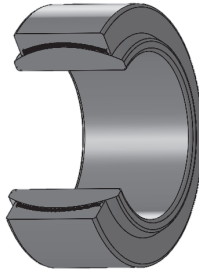
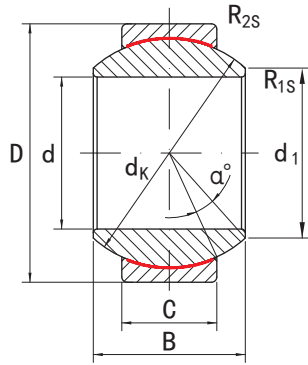
内圈 Inner ring	外圈 Outer ring
轴承钢 Bearing steel	轴承钢 Bearing steel
热处理 Heat treated: HRC58-64	热处理 Heat treated: HRC58-64
镀铬 Hard chrome plated	磷化 Phosphating
摩擦副 Sliding contact surfaces: 钢/PTFE 织布 Steel/PTFE fabric	

型号 Part No.	尺寸 Dimensions													载荷 Load ratings		重量 Weight kg
	mm													kN		
	d	D	H	dk	d1	d2	d3	B	C	S	R1s min	R2s min	α ≈	动载荷 Dynamic	静载荷 Static	
GE 10 AW	10	30	9.5	32	16.5	27.5	21	7.9	6	7	0.6	0.2	10	36	72	0.04
GE 12 AW	12	35	13	37	19.5	32	24	9.3	9	8	0.6	0.2	9	49	98	0.07
GE 15 AW	15	42	15	45	24	38.9	29	10.7	11	10	0.6	0.2	7	78	156	0.12
GE 17 AW	17	47	16	50	28	43.4	34	11.5	11.5	11	0.6	0.2	6	88	176	0.16
GE 20 AW	20	55	20	60	33.5	50	40	14.3	13	12.5	1	0.3	6	112	224	0.25
GE 25 AW	25	62	22.5	66	34.5	57.5	45	16	17	14	1	0.3	7	193	390	0.38
GE 30 AW	30	75	26	80	44	69	56	18	19.5	17.5	1	0.3	6	255	510	0.65
GE 35 AW	35	90	28	98	52	84	66	22	20	22	1	0.3	6	390	780	1.00
GE 40 AW	40	105	32	114	59	98	78	27	22	24.5	1	0.3	6	560	1120	1.60
GE 45 AW	45	120	36.5	130	68	112	89	31	25	27.5	1	0.3	6	735	1460	2.40
GE 50 AW	50	130	42.5	140	69	122.5	98	33.5	32	30	1	0.3	5	980	1960	3.30
GE 60 AW	60	150	45	160	86	140	108	37	33	35	1	0.3	7	1100	2200	4.50
GE 70 AW	70	160	50	170	95	149.5	121	40	36	35	1	0.3	6	1200	2400	5.50
GE 80 AW	80	180	50	194	108	168	130	42	36	42.5	1	0.3	6	1560	3100	7.00
GE 100 AW	100	210	59	220	133	195.5	155	50	42	45	1	0.3	7	1800	3600	10.50
GE 120 AW	120	230	64	245	154	214	170	52	45	52.5	1	0.3	8	1860	3750	13.00
GE 140 AW	140	260	72	272	176	244	198	61	50	52.5	1.5	0.6	6	2450	4900	18.00
GE 160 AW	160	290	77	310	199	272	213	65	52	65	1.5	0.6	7	2850	5700	23.00
GE 180 AW	180	320	86	335	224	300	240	70	60	67.5	1.5	0.6	8	3200	6400	31.00
GE 200 AW	200	340	87	358	246	321	265	74	60	70	1.5	0.6	8	3550	7100	34.00
GE 220 AW	220	370	97	388	265	350	289	82	67	75	1.5	0.6	7	4400	8800	44.50
GE 240 AW	240	400	103	420	294	382	314	87	73	77.5	1.5	0.6	6	5200	10400	55.00
GE 260 AW	260	430	115	449	317	409	336	95	80	82.5	1.5	0.6	7	5400	10800	69.00
GE 280 AW	280	460	110	480	337	445	366	100	85	80	3.0	1	4	8500	17000	82.00
GE 300 AW	300	480	110	490	356	460	388	100	90	80	3.0	1	3.5	8650	17300	87.00
GE 320 AW	320	520	116	540	380	500	405	105	91	95	4.0	1.1	4	10600	21200	109.00
GE 340 AW	340	540	116	550	380	510	432	105	91	95	4.0	1.1	4	11800	23600	114.00
GE 360 AW	360	560	125	575	400	535	452	115	95	95	4.0	1.1	4	12700	25500	129.00

■ 向心关节轴承 **GE..UK** 系列

RADIAL SPHERICAL PLAIN BEARINGS GE..UK SERIES

免维护 Maintenance-free



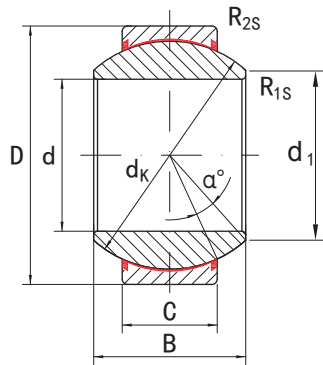
内圈 Inner ring	外圈 Outer ring
轴承钢 Bearing steel	碳钢 Carbon steel
热处理 Heat treated: HRC58-64	
镀铬 Hard chrome plated	
摩擦副 Sliding contact surfaces: 钢/PTFE Steel/PTFE	

型号 Part No.	尺寸 Dimensions									载荷 Load ratings		重量 Weight kg
	mm									kN		
	d	D	B	C	d ₁ min	d _k	R _{1s} min	R _{2s} min	α ≈	动载荷 Dynamic	静载荷 Static	
GE 6 UK	6	14	6	4	8	10	0.3	0.3	13	3.6	9.1	0.004
GE 8 UK	8	16	8	5	10	13	0.3	0.3	15	5.8	14	0.008
GE 10 UK	10	19	9	6	13	16	0.3	0.3	12	8.6	21	0.011
GE 12 UK	12	22	10	7	15	18	0.3	0.3	10	11	28	0.015
GE 15 UK	15	26	12	9	18	22	0.3	0.3	8	18	45	0.027
GE 17 UK	17	30	14	10	20	25	0.3	0.3	10	22	56	0.041
GE 20 UK	20	35	16	12	24	29	0.3	0.3	9	31	78	0.066
GE 25 UK	25	42	20	16	29	35.5	0.6	0.6	7	51	127	0.119
GE 30 UK	30	47	22	18	34	40.7	0.6	0.6	6	65	166	0.163

■ 向心关节轴承 GE..UK 2RS 系列

RADIAL SPHERICAL PLAIN BEARINGS GE..UK 2RS SERIES

免维护、带密封圈 Maintenance-free, sealed



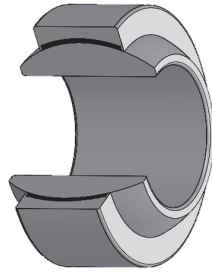
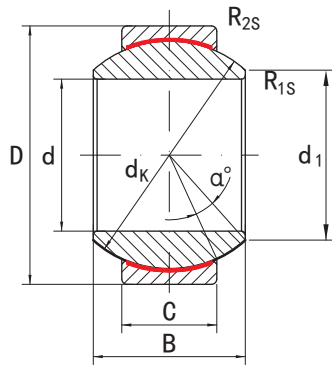
内圈 Inner ring	外圈 Outer ring
轴承钢 Bearing steel	轴承钢 Bearing steel
热处理 Heat treated: HRC58-64	热处理 Heat treated: HRC54-60
镀铬 Hard chrome plated	磷化 Phosphating
摩擦副 Sliding contact surfaces: 钢/PTFE 织布 Steel/PTFE fabric	

型号 Part No.	尺寸 Dimensions									载荷 Load ratings		重量 Weight kg
	mm									kN		
	d	D	B	C	d ₁ min	d _k	R _{1s} min	R _{2s} min	α ≈	动载荷 Dynamic	静载荷 Static	
GE 15 UK 2RS	15	26	12	9	18	22	0.3	0.3	9	25	59	0.035
GE 17 UK 2RS	17	30	14	10	20	25	0.3	0.3	10	32	75	0.041
GE 20 UK 2RS	20	35	16	12	24	29	0.3	0.3	9	45	104	0.066
GE 25 UK 2RS	25	42	20	16	29	35.5	0.6	0.6	7	85	204	0.119
GE 30 UK 2RS	30	47	22	18	34	40.7	0.6	0.6	6	110	263	0.153
GE 35 UK 2RS	35	55	25	20	39	47	0.6	1	6	140	338	0.233
GE 40 UK 2RS	40	62	28	22	45	53	0.6	1	7	175	419	0.306
GE 45 UK 2RS	45	68	32	25	50	60	0.6	1	7	225	540	0.427
GE 50 UK 2RS	50	75	35	28	55	66	0.6	1	6	275	665	0.546
GE 60 UK 2RS	60	90	44	36	66	80	1	1	6	430	1030	1.04
GE 70 UK 2RS	70	105	49	40	77	92	1	1	6	550	1320	1.55
GE 80 UK 2RS	80	120	55	45	88	105	1	1	6	705	1700	2.31
GE 90 UK 2RS	90	130	60	50	98	115	1	1	5	860	2070	2.75
GE 100 UK 2RS	100	150	70	55	109	130	1	1	7	1070	2570	4.45
GE 110 UK 2RS	110	160	70	55	121	140	1	1	6	1150	2770	4.82
GE 120 UK 2RS	120	180	85	70	135	160	1	1	6	1680	4030	8.05
GE 140 UK 2RS	140	210	90	70	155	180	1	1	7	1890	4530	11.02
GE 160 UK 2RS	160	230	105	80	170	200	1	1	8	2400	5760	14.01
GE 180 UK 2RS	180	260	105	80	199	225	1.1	1.1	6	2700	6480	18.65
GE 200 UK 2RS	200	290	130	100	213	250	1.1	1.1	7	3750	9000	28.03
GE 220 UK 2RS	220	320	135	100	239	275	1.1	1.1	8	4120	9900	35.51
GE 240 UK 2RS	240	340	140	100	265	300	1.1	1.1	8	4500	10800	39.91
GE 260 UK 2RS	260	370	150	110	288	325	1.1	1.1	7	5360	12870	51.54
GE 280 UK 2RS	280	400	155	120	313	350	1.1	1.1	6	6300	15120	65.06
GE 300 UK 2RS	300	430	165	120	336	375	1.1	1.1	7	6750	16200	78.07

向心关节轴承 GE..FW 系列

RADIAL SPHERICAL PLAIN BEARINGS GE..FW SERIES

免维护、重载荷型 Maintenance-free, heavy-duty



内圈 Inner ring	外圈 Outer ring
轴承钢 Bearing steel	碳钢 Carbon steel
热处理 Heat treated: HRC58-64	
镀铬 Hard chrome plated	
摩擦副 Sliding contact surfaces: 钢/PTFE Steel/PTFE	

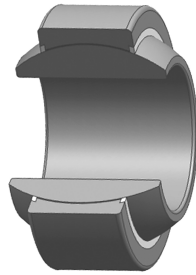
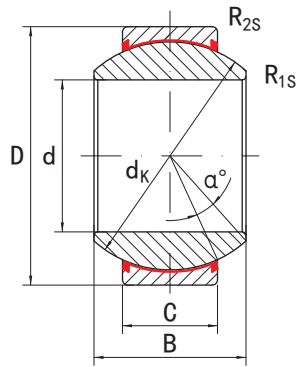
型号 Part No.	尺寸 Dimensions									载荷 Load ratings		重量 Weight kg
	mm									kN		
	d	D	B	C	d ₁ min	d _k	R _{1s} min	R _{2s} min	α ≈	动载荷 Dynamic	静载荷 Static	
GE 6 FW	6	16	9	5	9	13	0.3	0.3	21	5.8	14	0.008
GE 8 FW	8	19	11	6	11	16	0.3	0.3	21	8.6	21	0.014
GE 10 FW	10	22	12	7	13	18	0.3	0.3	18	11	28	0.021
GE 12 FW	12	26	15	9	16	22	0.3	0.3	18	18	45	0.033
GE 15 FW	15	30	16	10	19	25	0.3	0.3	16	22	56	0.049
GE 17 FW	17	35	20	12	21	29	0.3	0.3	19	31	78	0.083
GE 20 FW	20	42	25	16	24	35.5	0.3	0.3	17	51	127	0.153
GE 25 FW	25	47	28	18	29	40.7	0.6	0.6	17	65	166	0.203
GE 30 FW	30	55	32	20	34	47	0.6	0.6	17	83	212	0.304

向心关节轴承 GE..FW 2RS 系列



RADIAL SPHERICAL PLAIN BEARINGS GE..FW 2RS SERIES

免维护、重载荷、带密封圈 Maintenance-free, heavy-duty, sealed



内圈 Inner ring	外圈 Outer ring
轴承钢 Bearing steel	轴承钢 Bearing steel
热处理 Heat treated: HRC58-64	热处理 Heat treated: HRC54-60
镀铬 Hard chrome plated	磷化 Phosphating
摩擦副 Sliding contact surfaces: 钢/PTFE 织布 Steel/PTFE fabric	

型号 Part No.	尺寸 Dimensions								载荷 Load ratings		重量 Weight kg
	mm								kN		
	d	D	B	C	dk	R1s min	R2s min	α ≈	动载荷 Dynamic	静载荷 Static	
GE 15 FW 2RS	15	30	16	10	25	0.3	0.3	16	32	75	0.046
GE 17 FW 2RS	17	35	20	12	29	0.3	0.3	19	45	104	0.078
GE 20 FW 2RS	20	42	25	16	35.5	0.6	0.6	17	85	204	0.15
GE 25 FW 2RS	25	47	28	18	40.7	0.6	0.6	17	110	263	0.19
GE 30 FW 2RS	30	55	32	20	47	0.6	1	17	140	338	0.29
GE 35 FW 2RS	35	62	35	22	53	0.6	1	16	175	419	0.39
GE 40 FW 2RS	40	68	40	25	60	0.6	1	17	225	540	0.52
GE 45 FW 2RS	45	75	43	28	66	0.6	1	15	275	665	0.68
GE 50 FW 2RS	50	90	56	36	80	0.6	1	17	430	1030	1.4
GE 60 FW 2RS	60	105	63	40	92	1	1	17	550	1320	2.0
GE 70 FW 2RS	70	120	70	45	105	1	1	16	705	1700	2.9
GE 80 FW 2RS	80	130	75	50	115	1	1	14	860	2070	3.5
GE 90 FW 2RS	90	150	85	55	130	1	1	15	1070	2570	5.4
GE 100 FW 2RS	100	160	85	55	140	1	1	14	1150	2770	6.0
GE 110 FW 2RS	110	180	100	70	160	1	1	12	1680	4030	9.7
GE 120 FW 2RS	120	210	115	70	180	1	1	16	1890	4530	14.0
GE 140 FW 2RS	140	230	130	80	200	1	1	16	2400	5760	19.0
GE 160 FW 2RS	160	260	135	80	225	1.1	1.1	16	2700	6480	24.7
GE 180 FW 2RS	180	290	155	100	250	1.1	1.1	14	3750	9000	35.9
GE 200 FW 2RS	200	320	165	100	275	1.1	1.1	15	4120	9900	45.3
GE 220 FW 2RS	220	340	175	100	300	1.1	1.1	16	4500	10800	51.1
GE 240 FW 2RS	240	370	190	110	325	1.1	1.1	15	5360	12870	65.1
GE 260 FW 2RS	260	400	205	120	350	1.1	1.1	15	6300	15120	82.4
GE 280 FW 2RS	280	430	210	120	375	1.1	1.1	15	6750	16200	97.2