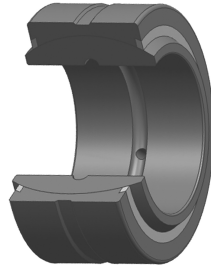
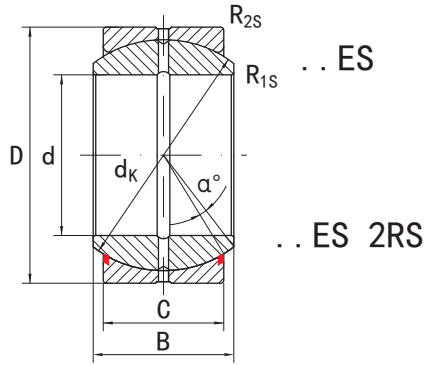


■ 向心关节轴承 **GEZ..ES,GEZ..ES 2RS** 系列

**RADIAL SPHERICAL PLAIN BEARINGS GEZ..ES,GEZ..ES 2RS SERIES**

需维护型、英制尺寸 Requiring maintenance,inch dimensions



内圈 Inner ring	外圈 Outer ring
轴承钢 Bearing steel	轴承钢 Bearing steel
热处理 Heat treated:HRC58-64	热处理 Heat treated:HRC54-60
磷化 Phosphating	磷化 Phosphating
摩擦副 Sliding contact surfaces: 钢/钢 Steel/Steel	

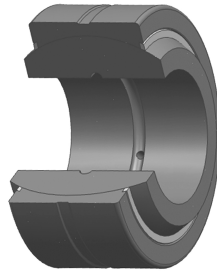
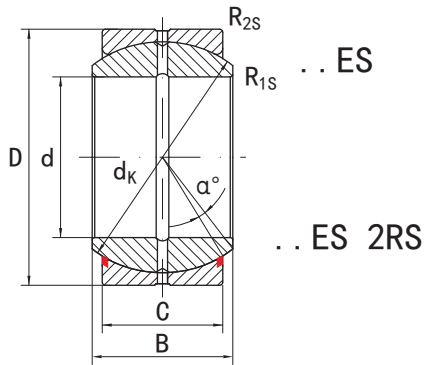
型号 Part No.	尺寸 Dimensions mm								载荷 Load ratings kN		重量 Weight kg
	d	D	B	C	dk	R <sub>1s</sub> min	R <sub>2s</sub> min	α ≈	动载荷 Dynamic	静载荷 Static	
GEZ 12 ES	12.7	22.225	11.1	9.525	18	0.3	0.6	6	13	41	0.022
GEZ 15 ES	15.875	26.988	13.894	11.913	23	0.3	0.6	6	22	65	0.036
GEZ 19 ES GEZ19ES 2RS	19.05	31.75	16.662	14.275	27.5	0.3	0.6	6	31	95	0.053
GEZ 22 ES GEZ22ES 2RS	22.225	36.513	19.431	16.662	32	0.3	0.6	6	42	127	0.085
GEZ 25 ES GEZ 25 ES 2RS	25.4	41.275	22.225	19.05	36.5	0.3	0.6	6	56	166	0.121
GEZ 31 ES GEZ 31 ES 2RS	31.75	50.8	27.762	23.8	45.5	0.6	0.6	6	86	260	0.232
GEZ 34 ES GEZ 34 ES 2RS	34.925	55.563	30.15	26.187	49	0.6	1	6	102	310	0.351
GEZ 38 ES GEZ 38 ES 2RS	38.1	61.913	33.325	28.575	54.7	0.6	1	6	125	375	0.422
GEZ 44 ES GEZ 44 ES 2RS	44.45	71.438	38.887	33.325	63.9	0.6	1	6	170	510	0.641
GEZ 50 ES GEZ 50 ES 2RS	50.8	80.963	44.45	38.1	73	0.6	1	6	224	670	0.932
GEZ 57 ES GEZ 57 ES 2RS	57.15	90.488	55.013	42.85	82	0.6	1	6	280	850	1.33
GEZ 63 ES GEZ 63 ES 2RS	63.5	100.013	55.55	47.625	92	1	1	6	355	1060	1.85
GEZ 69 ES GEZ 69 ES 2RS	69.85	111.125	61.112	52.375	100	1	1	6	415	1250	2.42
GEZ 76 ES GEZ 76 ES 2RS	76.2	120.65	66.675	57.15	109.5	1	1	6	500	1500	3.10
GEZ 82 ES GEZ 76 ES 2RS	82.55	130.175	72.238	61.9	119	1	1	6	585	1760	3.82
GEZ 88 ES GEZ 88 ES 2RS	88.9	139.7	77.775	66.675	128	1	1	6	680	2040	4.79
GEZ 95 ES GEZ 95 ES 2RS	95.25	149.225	83.337	71.425	137	1	1	6	780	2360	5.80
GEZ 101 ES GEZ 101 ES 2RS	101.6	158.75	88.9	76.2	146	1	1	6	900	2650	7.00
GEZ 107 ES GEZ 107 ES 2RS	107.95	168.275	94.463	80.95	154.9	1	1	6	1000	2900	8.41
GEZ 114 ES GEZ 114 ES 2RS	114.3	177.8	100.013	85.725	164.5	1	1	6	1120	3400	9.80
GEZ 120 ES GEZ 120 ES 2RS	120.65	187.325	105.562	90.475	173.5	1	1	6	1250	3750	11.50
GEZ 127 ES GEZ 127 ES 2RS	127	196.85	111.125	95.25	183	1	1	6	1400	4150	13.50
GEZ 152 ES GEZ 152 ES 2RS	152.4	222.25	120.65	104.775	207	1	1	5	1730	5200	17.50

■ 向心关节轴承 GEGZ..ES,GEGZ..ES 2RS 系列

**KGBAL**®

**RADIAL SPHERICAL PLAIN BEARINGS GEGZ..ES,GEGZ..ES 2RS SERIES**

需维护型、英制尺寸 Requiring maintenance,inch dimensions



内圈 Inner ring	外圈 Outer ring
轴承钢 Bearing steel	轴承钢 Bearing steel
热处理 Heat treated:HRC58-64	热处理 Heat treated:HRC54-60
磷化 Phosphating	磷化 Phosphating
摩擦副 Sliding contact surfaces: 钢/钢 Steel/Steel	

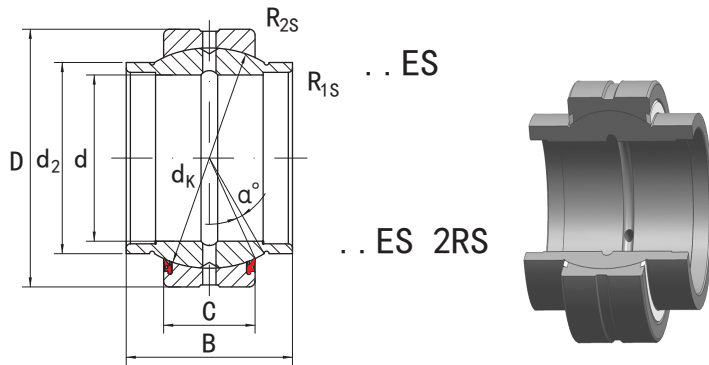
型号 Part No.	尺寸 Dimensions mm									载荷 Load ratings kN		重量 Weight kg
	d	D	B	C	dk	R <sub>1s</sub> min	R <sub>2s</sub> min	α ≈	动载荷 Dynamic	静载荷 Static		
GEGZ 31 ES GEGZ 31 ES 2RS	31.75	61.913	35.306	28.575	54.7	0.6	1	15	125	375	0.454	
GEGZ 38 ES GEGZ 38 ES 2RS	38.1	71.438	40.132	33.325	63.9	0.6	1	14	170	510	0.726	
GEGZ 44 ES GEGZ 44 ES 2RS	44.45	80.963	46.228	38.1	73	0.6	1	14	224	670	1.14	
GEGZ 50 ES GEGZ 50 ES 2RS	50.8	90.488	52.578	42.85	82	0.6	1	14	280	850	1.68	
GEGZ 57 ES GEGZ 57 ES 2RS	57.15	100.013	58.877	47.625	92	0.6	1	14	355	1060	2.01	
GEGZ 63 ES GEGZ 63 ES 2RS	63.5	111.125	64.643	52.375	100	1	1	14	415	1250	2.95	
GEGZ 69 ES GEGZ 69 ES 2RS	69.85	120.65	70.866	57.15	109.5	1	1	14	500	1500	3.63	
GEGZ 76 ES GEGZ 76 ES 2RS	76.2	130.175	76.759	61.9	119	1	1	14	585	1760	4.36	
GEGZ 82 ES GEGZ 82 ES 2RS	82.55	139.7	82.931	66.675	128	1	1	14	680	2040	5.31	
GEGZ 88 ES GEGZ 88 ES 2RS	88.9	149.225	90.424	71.425	137	1	1	14	780	2360	6.81	
GEGZ 95 ES GEGZ 95 ES 2RS	95.25	158.75	94.945	76.2	146	1	1	14	900	2650	8.85	
GEGZ 101 ES GEGZ 101 ES 2RS	101.6	177.8	107.315	85.725	164.5	1	1	10	1120	3400	10.2	

■ 向心关节轴承 **GEWZ..ES,GEWZ..ES 2RS** 系列

**KGBAL**®

**RADIAL SPHERICAL PLAIN BEARINGS GEWZ..ES,GEWZ..ES 2RS SERIES**

需维护、英制尺寸 Requiring maintenance,inch dimensions



内圈 Inner ring	外圈 Outer ring
轴承钢 Bearing steel	轴承钢 Bearing steel
热处理 Heat treated:HRC58-64	热处理 Heat treated:HRC54-60
磷化 Phosphating	磷化 Phosphating
摩擦副 Sliding contact surfaces: 钢/钢 Steel/Steel	

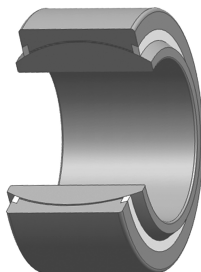
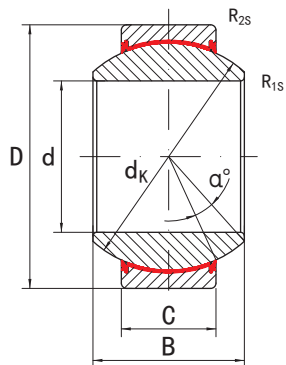
型号 Part No.	尺寸 Dimensions									载荷 Load ratings		重量 Weight kg
	mm									kN		
	d	D	B	C	d <sub>2</sub>	d <sub>k</sub>	R <sub>1s</sub> min	R <sub>2s</sub> min	α ≈	动载荷 Dynamic	静载荷 Static	
GEWZ 12 ES	12.7	22.225	19.05	9.525	15.875	18	0.15	0.6	9	13	41	0.024
GEWZ 15 ES	15.875	26.988	23.8	11.913	19.812	23	0.15	0.6	9	22	65	0.038
GEWZ 19 ES GEWZ 19 ES 2RS	19.05	31.75	28.575	14.275	23.368	27.5	0.3	0.6	9	31	95	0.064
GEWZ 22 ES GEWZ 22 ES 2RS	22.225	36.513	33.325	16.662	27.178	32	0.3	0.6	9	42	127	0.098
GEWZ 25 ES GEWZ 25 ES 2RS	25.4	41.275	38.1	19.05	30.988	36.5	0.3	0.6	9	56	166	0.142
GEWZ 31 ES GEWZ 31 ES 2RS	31.75	50.8	47.625	23.8	38.735	45.5	0.6	0.6	9	86	260	0.271
GEWZ 34 ES GEWZ 34 ES 2RS	34.925	55.563	52.375	26.187	42.418	49	0.6	1	9	102	310	0.373
GEWZ 38 ES GEWZ 38 ES 2RS	38.1	61.913	57.15	28.575	46.99	54.7	0.6	1	9	125	375	0.494
GEWZ 44 ES GEWZ 44 ES 2RS	44.45	71.438	66.675	33.325	54.991	63.9	0.6	1	9	170	510	0.762
GEWZ 50 ES GEWZ 50 ES 2RS	50.8	80.963	76.2	38.1	62.484	73	0.6	1	9	224	670	1.11
GEWZ 57 ES GEWZ 57 ES 2RS	57.15	90.488	85.725	42.85	70.104	82	0.6	1	9	280	850	1.57
GEWZ 63 ES GEWZ 63 ES 2RS	63.5	100.013	95.25	47.625	77.724	92	1	1	9	355	1060	2.15
GEWZ 69 ES GEWZ 69 ES 2RS	69.85	111.125	104.775	52.375	85.852	100	1	1	9	415	1250	2.9
GEWZ 76 ES GEWZ 76 ES 2RS	76.2	120.65	114.3	57.15	93.345	109.5	1	1	9	500	1500	3.59
GEWZ 82 ES GEWZ 82 ES 2RS	82.55	130.175	123.825	61.9	101.219	119	1	1	9	585	1760	4.69
GEWZ 88 ES GEWZ 88 ES 2RS	88.9	139.7	133.35	66.675	109.22	128	1	1	9	680	2040	5.86
GEWZ 95 ES GEWZ 95 ES 2RS	95.25	149.225	142.875	71.425	116.586	137	1	1	9	780	2360	7.11
GEWZ 101 ES GEWZ 101 ES 2RS	101.6	158.75	152.4	76.2	124.587	146	1	1	9	900	2650	8.56
GEWZ 114 ES GEWZ 114 ES 2RS	114.3	177.8	171.45	85.725	140.335	164.5	1	1	7	1120	3400	12.24
GEWZ 127 ES GEWZ 127 ES 2RS	127	196.85	190.5	95.25	155.705	183	1	1	7	1400	4150	16.63
GEWZ 152 ES GEWZ 152 ES 2RS	152.4	222.25	209.55	104.775	178.308	207	1	1	7	1730	5200	20.7

# 向心关节轴承GEZ..ET 2RS系列



## RADIAL SPHERICAL PLAIN BEARINGS GEZ..ET 2RS SERIES

免维护、英制尺寸 Maintenance-free, inch dimensions



内圈 Inner ring	外圈 Outer ring
轴承钢 Bearing steel	轴承钢 Bearing steel
热处理 Heat treated: HRC58-64	热处理 Heat treated: HRC54-60
镀铬 Hard chrome plated	磷化 Phosphating
摩擦副 Sliding contact surfaces: 钢/PTFE 织布 Steel/PTFE fabric	

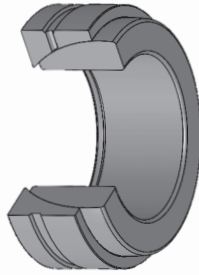
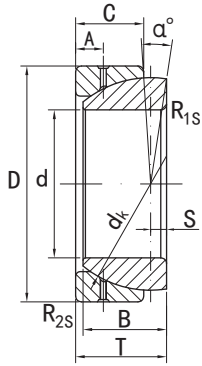
型号 Part No.	尺寸 Dimensions								载荷 Load ratings		重量 Weight kg
	mm								kN		
	d	D	B	C	dk	R <sub>1s</sub> min	R <sub>2s</sub> min	α ≈	动载荷 Dynamic	静载荷 Static	
GEZ 19 ET 2RS	19.05	31.75	16.662	14.275	27.5	0.3	0.6	6	50	117	0.053
GEZ 22 ET 2RS	22.225	36.513	19.431	16.662	32	0.3	0.6	6	69	160	0.085
GEZ 25 ET 2RS	25.4	41.275	22.225	19.05	36.5	0.3	0.6	6	104	250	0.121
GEZ 31 ET 2RS	31.75	50.8	27.762	23.8	45.5	0.6	0.6	6	160	390	0.23
GEZ 34 ET 2RS	34.925	55.563	30.15	26.187	49	0.6	1	5	190	460	0.35
GEZ 38 ET 2RS	38.1	61.913	33.325	28.575	54.7	0.6	1	6	235	560	0.42
GEZ 44 ET 2RS	44.45	71.438	38.887	33.325	63.9	0.6	1	6	320	765	0.64
GEZ 50 ET 2RS	50.8	80.963	44.45	38.1	73	0.6	1	6	415	1000	0.93
GEZ 57 ET 2RS	57.15	90.488	50.013	42.85	82	0.6	1	6	525	1260	1.30
GEZ 63 ET 2RS	63.5	100.013	55.55	47.625	92	1	1	6	655	1570	1.85
GEZ 69 ET 2RS	69.85	111.125	61.112	52.375	100	1	1	6	785	1880	2.4
GEZ 76 ET 2RS	76.2	120.65	66.675	57.15	109.5	1	1	6	935	2250	3.1
GEZ 82 ET 2RS	82.55	130.175	72.238	61.9	119	1	1	6	1100	2650	3.8
GEZ 88 ET 2RS	88.9	139.7	77.775	66.675	128	1	1	6	1280	3070	4.8
GEZ 95 ET 2RS	95.25	149.225	83.337	71.425	137	1	1	6	1460	3520	5.8
GEZ 101 ET 2RS	101.6	158.75	88.9	76.2	146	1	1	6	1660	4000	7.0
GEZ 107 ET 2RS	107.95	168.275	94.463	80.95	155	1	1	6	1880	4510	8.4
GEZ 114 ET 2RS	114.3	177.8	100.013	85.725	164.5	1	1	6	2110	5070	9.8
GEZ 120 ET 2RS	120.65	187.325	105.562	90.475	173.5	1	1	6	2350	5650	11.5
GEZ 127 ET 2RS	127	196.85	111.125	95.25	183	1	1	6	2610	6270	13.5
GEZ 152 ET 2RS	152.4	222.25	120.65	104.775	207	1	1	5	3250	7800	17.5

# 角接触关节轴承 GACZ..S 系列

**KGBAL®**

## ANGULAR CONTACT SPHERICAL PLAIN BEARINGS GACZ..S SERIES

需维护、英制尺寸 Requiring maintenance, inch dimensions



内圈 Inner ring	外圈 Outer ring
轴承钢 Bearing steel	轴承钢 Bearing steel
热处理 Heat treated: HRC58-64	热处理 Heat treated: HRC58-64
磷化 Phosphating	磷化 Phosphating
摩擦副 Sliding contact surfaces: 钢/钢 Steel/Steel	

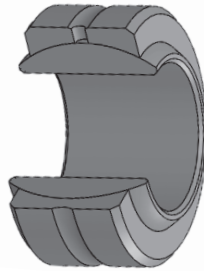
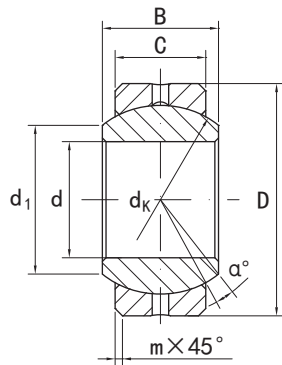
型号 Part No.	尺寸 Dimensions										载荷 Load ratings		重量 Weight kg
	mm										kN		
	d	D	B	C	T	dk	S	A	R <sub>1s</sub> , R <sub>2s</sub> min	α ≈	动载荷 Dynamic	静载荷 Static	
GACZ 12 S	12.7	22.225	6.86	4.83	7.62	18.26	1.3	2.39	0.51	7	6	18	0.013
GACZ 15 S	15.875	26.988	8.64	6.35	9.4	22.83	1.48	2.77	0.76	6	10	31	0.025
GACZ 19 S	19.05	31.75	10.41	7.87	11.18	27.43	1.79	3.18	1	6	16	47	0.038
GACZ 22 S	22.225	36.512	12.19	9.65	13.21	31.95	2.02	4.37	2	5.5	22	66	0.049
GACZ 25 S	25.4	41.275	13.97	11.18	15.24	36.5	2.54	5.16	2	6	29	87	0.085
GACZ 31 S	31.75	50.8	17.78	13.97	18.8	45.59	3.36	5.94	2	6	47	142	0.159
GACZ 34 S	34.925	55.562	19.56	15.24	21.34	49.2	3.69	7.14	2.54	4	53	159	0.213
GACZ 38 S	38.1	61.912	21.34	16.76	23.11	54.74	3.93	7.92	2.54	5.5	66	197	0.301
GACZ 44 S	44.45	71.438	24.89	20.07	27.18	63.88	4.72	8.33	2.54	6	91	273	0.458
GACZ 50 S	50.8	80.962	28.7	23.37	31.24	73.02	5.51	9.52	3.56	5.5	122	365	0.671
GACZ 57 S	57.15	90.488	32.26	26.67	35.31	82.17	6.18	11.51	3.56	5.5	155	466	0.948
GACZ 63 S	63.5	100.013	36.07	29.97	39.12	91.19	6.79	12.7	3.56	5	196	589	1.130
GACZ 69 S	69.85	111.125	39.62	32.38	43.18	100.33	7.46	13.08	4.6	5	231	694	1.750
GACZ 76 S	76.2	120.65	43.43	35.69	47.24	109.52	8.17	14.68	4.6	5	279	838	2.280
GACZ 82 S	82.55	130.175	47.24	39.24	51.56	118.74	9.04	16.66	4.6	5	322	995	2.890
GACZ 88 S	88.9	139.7	50.8	42.54	55.37	128.02	9.51	17.86	4.6	5	389	1167	3.570
GACZ 95 S	95.25	149.225	54.61	45.85	59.44	136.91	10.1	19.43	4.6	4.5	449	1348	4.350
GACZ 101 S	101.6	158.75	58.42	49.15	63.5	146.05	10.4	19.84	4.6	4.5	515	1545	5.260
GACZ 114 S	114.3	177.8	65.79	55.75	71.12	164.46	12.4	22.22	4.6	4.5	663	1990	7.760
GACZ 127 S	127	196.85	73.15	62.36	79.5	182.63	13.9	25.4	4.6	4.5	818	2455	11.070
GACZ 152 S	152.4	222.25	78.74	66.42	85.72	207.16	16.1	34.8	4.6	4.5	985	2955	17.370

# 向心关节轴承 COM.,HCOM. 系列

**KGBAL®**

## RADIAL SPHERICAL PLAIN BEARINGS COM.,HCOM. SERIES

需维护型、英制尺寸 Requiring maintenance, inch dimensions



内圈 Inner ring	外圈 Outer ring
轴承钢 Bearing steel	碳钢/合金钢
热处理 Heat treated: HRC58-62	Carbon steel/Alloy steel
镀铬 Hard chrome plated	
摩擦副 Sliding contact surfaces: 钢/钢 Steel/Steel	

型号 Part No.	尺寸 Dimensions								mm	载荷 Load ratings kN	重量 Weight kg
	d	d <sub>1</sub>	B	C	D	d <sub>k</sub>	m	α ≈			
COM 3	4.826	7.44	7.14	5.54	14.29	10.31	0.381	11	14.464	0.006	
COM 4	6.35	9.25	8.71	6.35	16.67	12.70	0.56	13.5	22.015	0.010	
COM 5	7.938	10.64	9.53	7.14	19.05	14.27	0.81	12	28.800	0.014	
COM 6	9.525	13.11	10.31	7.92	20.64	16.66	0.81	10	37.361	0.017	
COM 7	11.113	13.46	11.10	8.71	23.02	17.45	0.81	8.0	42.048	0.021	
COM 8	12.70	16.26	12.70	9.91	25.40	20.65	0.81	9.5	58.934	0.029	
COM 9	14.288	18.03	14.27	11.10	27.78	23.01	0.81	9.5	73.967	0.039	
COM 10	15.875	19.81	15.88	12.70	30.16	25.40	0.81	8.5	94.658	0.050	
COM 12	19.05	23.37	19.05	15.06	36.51	30.15	1.12	9.0	141.982	0.093	
COM 14	22.225	24.89	22.23	17.86	39.69	33.32	1.12	9.5	186.639	0.119	
COM 16	25.40	28.40	25.40	20.24	44.45	38.10	1.12	10	245.534	0.175	
HCOM 16	25.40	34.54	25.40	19.84	50.80	42.85	0.81	9.0	315.010	0.251	
HCOM 19	30.163	40.89	30.15	23.80	60.33	50.80	0.81	8.5	448.049	0.406	
HCOM 20	31.75	40.89	30.15	23.80	60.33	50.80	0.81	8.5	448.049	0.406	
HCOM 24	38.10	47.24	34.93	27.79	69.85	58.72	0.81	8.5	604.710	0.616	
HCOM 28	44.45	53.59	39.67	31.75	79.38	66.68	1.12	8.0	784.495	0.884	
HCOM 32	50.80	59.94	44.45	34.93	88.90	74.60	1.12	8.5	965.485	1.198	

——型号前带“H”表示此时外圈的材质为合金钢(42CrMo)并热处理。

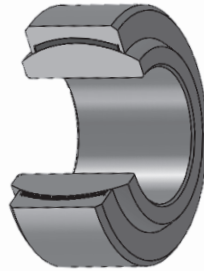
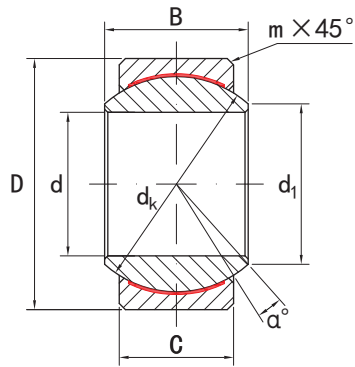
——For the prefix "H" size, race material is alloy steel(42CrMo) and heat treated.

# 向心关节轴承 COM..T/HCOM..T 系列

**KGBAL®**

## RADIAL SPHERICAL PLAIN BEARINGS COM..T/HCOM..T SERIES

免维护型、英制尺寸 Maintenance-free, inch dimensions



内圈 Inner ring	外圈 Outer ring
轴承钢 Bearing steel	碳钢/合金钢
热处理 Heat treated: HRC58-62	Carbon steel/Alloy steel
镀铬 Hard chrome plated	
摩擦副 Sliding contact surfaces: 钢/PTFE Steel/PTFE	

型号 Part No.	尺寸 Dimensions								载荷 Load ratings kN	重量 Weight kg
	d	d <sub>1</sub>	B	C	D	d <sub>k</sub>	m	α ≈		
COM 3 T	4.826	7.44	7.14	5.54	14.29	10.31	0.381	11	21.68	0.006
COM 4 T	6.35	9.25	8.71	6.35	16.67	12.70	0.56	13.5	33.02	0.010
COM 5 T	7.938	10.64	9.53	7.14	19.05	14.27	0.81	12	43.20	0.014
COM 6 T	9.525	13.11	10.31	7.92	20.64	16.66	0.81	10	56.04	0.017
COM 7 T	11.113	13.46	11.10	8.71	23.02	17.45	0.81	8.0	63.07	0.021
COM 8 T	12.70	16.26	12.70	9.91	25.40	20.65	0.81	9.5	88.39	0.029
COM 9 T	14.288	18.03	14.27	11.10	27.78	23.01	0.81	9.5	110.94	0.039
COM 10 T	15.875	19.81	15.88	12.70	30.16	25.40	0.81	8.5	141.96	0.050
COM 12 T	19.05	23.37	19.05	15.06	36.51	30.15	1.12	9.0	212.94	0.093
COM 14 T	22.225	24.89	22.23	17.86	39.69	33.32	1.12	9.5	279.93	0.119
COM 16 T	25.40	28.40	25.40	20.24	44.45	38.10	1.12	10	368.25	0.175
HCOM 16 T	25.40	34.54	25.40	19.84	50.80	42.85	0.81	9.0	472.46	0.251
HCOM 19 T	30.163	40.89	30.15	23.80	60.33	50.80	0.81	8.5	672.00	0.406
HCOM 20 T	31.75	40.89	30.15	23.80	60.33	50.80	0.81	8.5	672.00	0.406
HCOM 24 T	38.10	47.24	34.93	27.79	69.85	58.72	0.81	8.5	906.96	0.616
HCOM 28 T	44.45	53.59	39.67	31.75	79.38	66.68	1.12	8.0	1176.61	0.884
HCOM 32 T	50.80	59.94	44.45	34.93	88.90	74.60	1.12	8.5	1448.06	1.198

——型号前带“H”表示此时外圈的材质为合金钢(42CrMo)并热处理。

——For the prefix "H" size, race material is alloy steel(42CrMo) and heat treated.